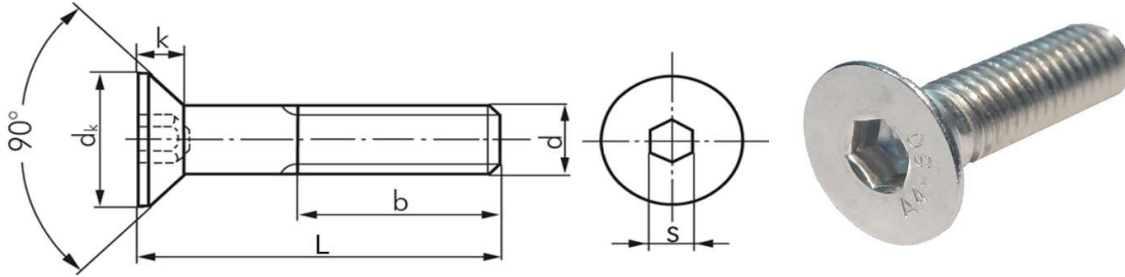


LỤC GIÁC CHÌM ĐẦU COL HỆ INCH



Đơn vị: Inch

Hướng dẫn tạo mã hàng	Mã	Ký hiệu		Chiều dài	T/P	Vật Liệu	Tiêu chuẩn
		UNC	UNF	1/2"/1.3/4"			
	B03	S1401	S1402	012/134	T: Ren toàn thân P: Ren lửng	E10: Thép đen H00: Inox 304	ASME

Ví Dụ: B03S1401012TE10 (LGC Col Thép Đen UNC 1/4-20 x 1/2)

Ghi Chú: Ký Hiệu UNC Là Ren Thô, UNF Là Ren Mịn.

Kích thước ren (d)	Bước ren		Ký hiệu	Chiều dài (L)	dk	k	S	b
	UNC	UNF			Max	Ref	Nor.	
#0	-	80	S000	1/8 3/16 1/4 5/16 3/8 1/2 5/8 3/4 1	0.138	0.044	0.035	Ren toàn thân
#1	64	72	S001	3/16 1/4 5/16 3/8	0.168	0.054	0.05	
#2	56	64	S002	1/8 3/16 1/4 5/16 3/8 1/2 5/8 3/4 1	0.197	0.064	0.05	
#3	48	56	S003	1/4 3/8	0.226	0.073	0.062	
#4	40	48	S004	3/16 1/4 5/16 3/8 1/2 5/8 3/4 7/8 1 1.25 1.5 1.75 2	0.255	0.083	0.062	
#5	40	44	S005	3/16 1/4 3/8 1/2 5/8 3/4 1	0.281	0.090	0.078	
#6	32	40	S006	3/16 1/4 5/16 3/8 1/2 7/16 5/8 3/4 7/8 1 1.25 1.5 1.75 2	0.307	0.097	0.078	
#8	32	36	S008	1/4 5/16 3/8 1/2 5/8 3/4 7/8 1 1.25 1.5 1.75 2 2.5 3	0.359	0.112	0.094	
#10	24	32	S010	1/4 5/16 3/8 1/2 5/8 3/4 7/8 1 1.25 1.5 1.75 2 2.5 3	0.411	0.127	0.125	
1/4	20	28	S140	3/8 1/2 5/8 3/4 7/8 1 1.25 1.5 1.75 2 2.5 3 3.5 4	0.531	0.161	0.156	
5/16	18	24	S516	3/8 1/2 5/8 3/4 7/8 1 1.25 1.5 1.75 2 2.25 2.5 3 3.5 4	0.656	0.198	0.188	
3/8	16	24	S380	1/2 5/8 3/4 7/8 1 1.25 1.5 1.75 2 2.25 2.5 3 3.5 4 4.5 5 6	0.781	0.234	0.219	
7/16	14	20	S716	3/4 1 1.25 1.5 1.75 2 2.5 3 3.5 4	0.844	0.234	0.25	
1/2	13	20	S120	3/4 1 1.25 1.5 1.75 2 2.25 2.5 2.75 3 3.5 4 4.5 5 6 7 8	0.938	0.251	0.312	
5/8	11	18	S580	1 1.25 1.5 1.75 2 2.25 2.5 3 3.5 4 4.5 5 6 7 8	1.188	0.324	0.375	
3/4	10	16	S340	1 1.25 1.5 1.75 2 2.25 2.5 3 3.5 4 4.5 5 6 7 8	1.438	0.396	0.5	
7/8	9	14	S780	2 2.5 3 3.5 4 4.5 5 6	1.688	0.468	0.562	
1	8	12	S100	2 2.25 2.5 3 3.5 4 4.5 5 6 7 8	1.938	0.540	0.625	