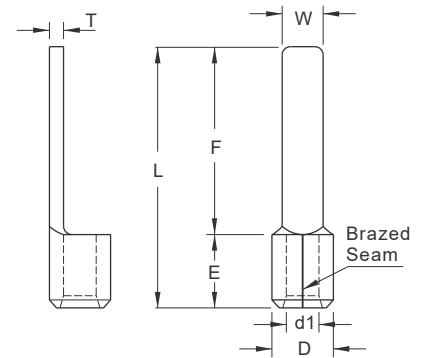


**NON-INSULATED  
BLADE TERMINALS**



**MAXIMUM ELECTRIC CURRENT:**

A.W.G.	26	24	22	20	18	16	14
AMP.	5.5	7	9	12	17	18	30

**TERMINAL MATERIAL: COPPER**

WIRE RANGE A.W.G. mm <sup>2</sup>	ITEM NO.		DIMENSION <sup>inch</sup> / <sub>mm</sub>							CRIMPING TOOL	Q'TY BOX
	BRAZED SEAM	BUTTED SEAM	W	F	L	E	D	d1	T		
26-22 A.W.G. 0.2-0.5 mm <sup>2</sup>	DBNB0.5-8	DBN0.5-8	.059 1.5	.315 8.0	.472 12.0	.157 4.0	.087 2.2	.039 1.0	.020 0.5	IZUMI MODEL KSTHT-203 WITH DIE INDEX NO:(INSUL)16-22	1000
22-16 A.W.G. 0.5-1.5 mm <sup>2</sup>	DBNB1-9	DBN1-9	.110 2.8	.354 9.0	.543 13.8	.189 4.8	.134 3.4	.067 1.7	.030 0.75	IZUMI MODEL <b>5N18</b> WITH DIE INDEX NO:1.25  OR K.S. MODEL <b>KST2000D-1322</b> WITH DIE INDEX NO:22-18  OR K.S. MODEL <b>KM-70L</b> WITH DIE SET NO. DIE-1322 WITH DIE INDEX NO:22-18	1000
	DBNB1-10	DBN1-10	.091 2.3	.394 10.0	.583 14.8						1000
	DBNB1-11	DBN1-11	.118 3.0	.433 11.0	.622 15.8						1000
	DBNBS1-13*	DBNS1-13*	.075 1.9	.512 13.0	.701 17.8						1000
	DBNB1-13	DBN1-13	.118 3.0								1000
	DBNB1-14	DBN1-14	.118 3.0	.551 14.0	.740 18.8						1000
	DBNB1-18	DBN1-18	.087 2.2	.709 18.0	.898 22.8						1000
	DBNBS1-18	DBNS1-18	.079 2.0								1000
16-14 A.W.G. 1.5-2.5 mm <sup>2</sup>	DBNB2-9	DBN2-9	.110 2.8	.354 9.0	.543 13.8	.189 4.8	.161 4.1	.091 2.3	.031 0.8	IZUMI MODEL <b>5N18</b> WITH DIE INDEX NO:2  OR K.S. MODEL <b>KST2000D-1322</b> WITH DIE INDEX NO:16-14  OR K.S. MODEL <b>KM-70L</b> WITH DIE SET NO. DIE-1322 WITH DIE INDEX NO.16-14	1000
	DBNB2-10	DBN2-10	.094 2.4	.394 10.0	.583 14.8						1000
	DBNB2-13	DBN2-13	.094 2.4		.701 17.8						1000
	DBNBL2-13	DBNL2-13	.118 3.0	.512 13.0							1000
	DBNBLL2-13	DBNLL2-13	.177 4.5		.709 18.0						1000
	DBNBS2-14	DBNS2-14	.083 2.1								1000
	DBNB2-14	DBN2-14	.094 2.4	.551 14.0	.740 18.8						1000
	DBNBL2-14	DBNL2-14	.118 3.0								1000
	DBNBS2-18	DBNS2-18	.079 2.0								1000
	DBNB2-18	DBN2-18	.087 2.2	.709 18.0	.898 22.8						1000
	DBNBL2-18	DBNL2-18	.110 2.8								1000

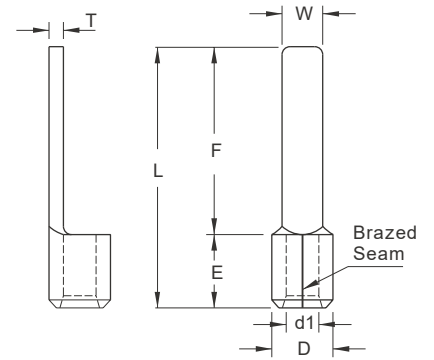


ALL LISTED

⊙ : NOT UL AND C-UL LISTED

\* : DEVELOPING ON DEMAND

**NON-INSULATED  
BLADE TERMINALS**



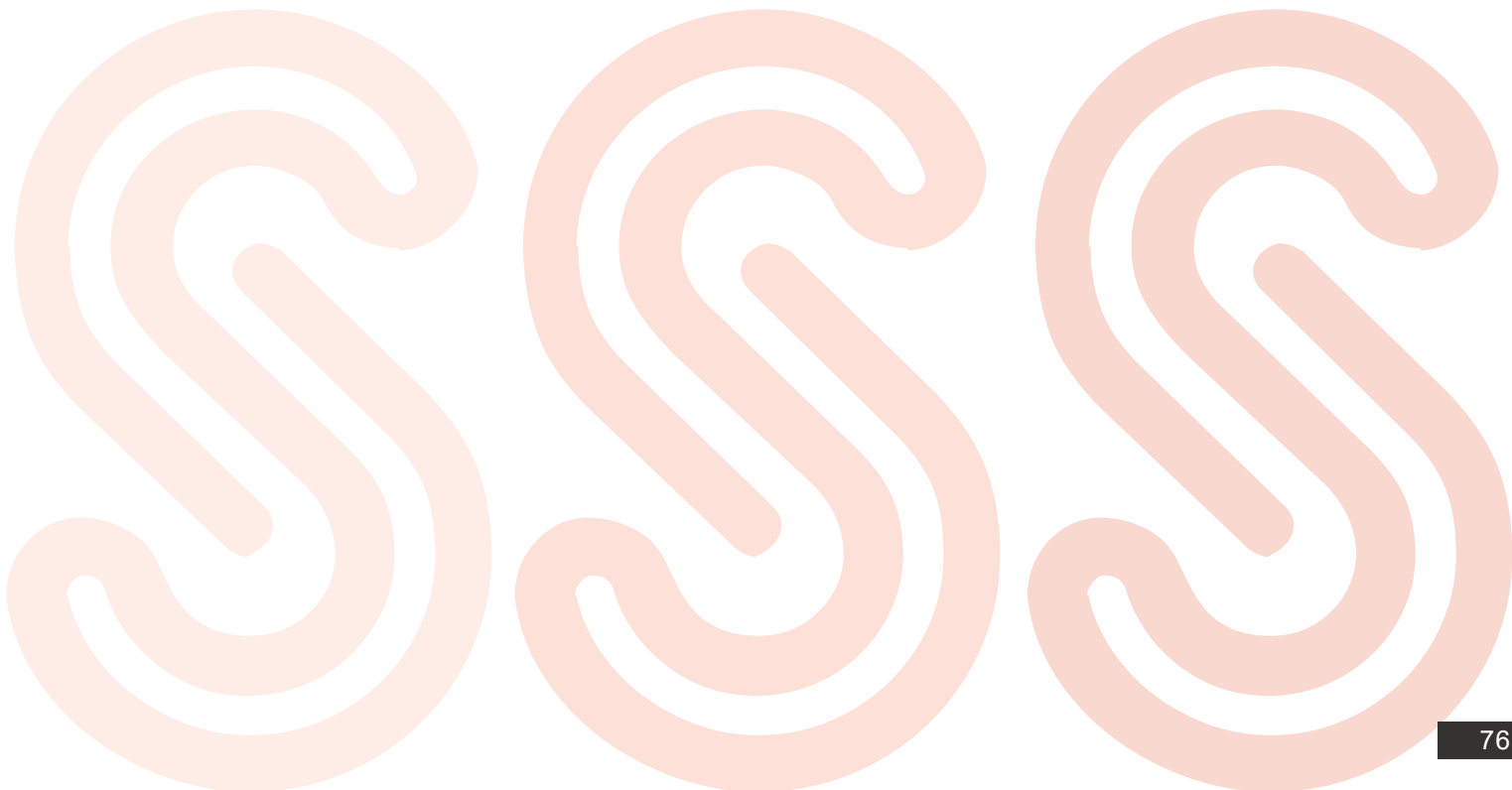
**MAXIMUM ELECTRIC CURRENT:**

A.W.G.	12	10
AMP.	35	50

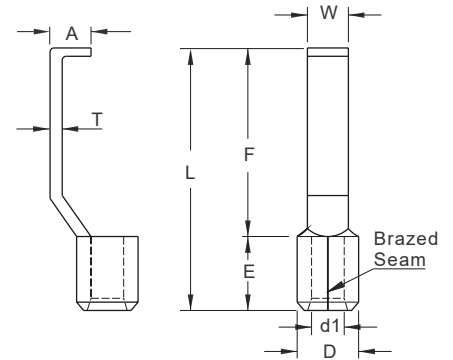
**TERMINAL MATERIAL: COPPER**

WIRE RANGE A.W.G. mm <sup>2</sup>	ITEM NO.		DIMENSION <sup>inch</sup> / <sub>mm</sub>							CRIMPING TOOL	Q'TY BOX
	BRAZED SEAM	BUTTED SEAM	W	F	L	E	D	d1	T		
12-10 A.W.G.	DBNB5-10	DBN5-10	.110 2.8	.394 10.0	.630 16.0	.236 6.0	.220 5.6	.134 3.4	.039 1.0	IZUMI MODEL <b>5N18</b> WITH DIE INDEX NO:5.5  OR K.S. MODEL <b>KST2000D-1322</b> LY-2045A WITH DIE INDEX NO:5.5	1000
	DBNB5-13	DBN5-13	.177 4.5	.512 13.0	.748 19.0						500
4-6 mm <sup>2</sup>	DBNBS5-14	DBNS5-14	.157 4.0	.551 14.0	.787 20.0						500
	DBNB5-14	DBN5-14	.177 4.5								500
	DBNBS5-18	DBNS5-18	.079 2.0	.709 18.0	.945 24.0						500
	DBNB5-18	DBN5-18	.177 4.5								500

ALL LISTED



**NON-INSULATED  
LIPPED BLADE TERMINALS**



**MAXIMUM ELECTRIC CURRENT:**

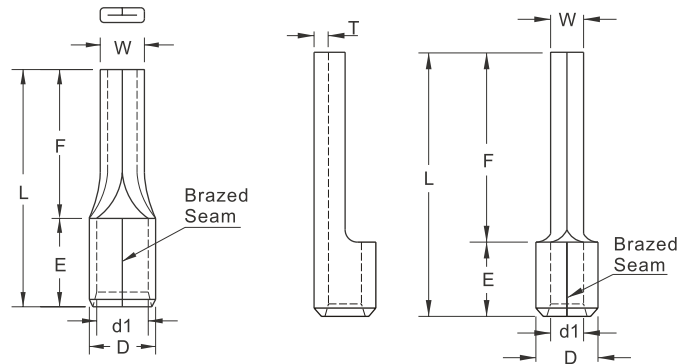
A.W.G.	22	20	18	16	14	12	10
AMP.	9	12	17	18	30	35	50

**TERMINAL MATERIAL: COPPER**

WIRE RANGE A.W.G. mm <sup>2</sup>	ITEM NO.		DIMENSION <small>inch mm</small>								CRIMPING TOOL	Q'TY BOX	
	BRAZED SEAM	BUTTED SEAM	W	F	L	E	D	d1	A	T			
22-16 A.W.G.  0.5-1.5 mm <sup>2</sup>	LBNB1-3	LBN1-3	.118 3.0									IZUMI MODEL <b>5N18</b> WITH DIE INDEX NO:1.25 OR K.S. MODEL <b>KST2000D-1322</b> WITH DIE INDEX NO:22-18 OR K.S. MODEL <b>KM-70L</b> WITH DIE SET NO.DIE-1322 WITH DIE INDEX NO:22-18	1000
	LBNB1-4.6	LBN1-4.6	.181 4.6	.685 17.4	.874 22.2	.189 4.8	.134 3.4	.067 1.7	.083 2.1	.030 0.75	1000		
16-14 A.W.G.  1.5-2.5 mm <sup>2</sup>	LBNB2-3	LBN2-3	.118 3.0									IZUMI MODEL <b>5N18</b> WITH DIE INDEX NO:2 OR K.S. MODEL <b>KST2000D-1322</b> WITH DIE INDEX NO:16-14 OR K.S. MODEL <b>KM-70L</b> WITH DIE SET NO.DIE-1322 WITH DIE INDEX NO:16-14	1000
	LBNB2-4.6	LBN2-4.6	.181 4.6	.685 17.4	.874 22.2	.189 4.8	.161 4.1	.091 2.3	.083 2.1	.031 0.8	1000		
12-10 A.W.G.  4-6 mm <sup>2</sup>	LBNB5-3	LBN5-3	.118 3.0							.110 2.8		IZUMI MODEL <b>5N18</b> WITH DIE INDEX NO:5.5 OR K.S. MODEL <b>KST2000D-1322</b> WITH DIE INDEX NO:12-10 OR K.S. MODEL <b>KM-70L</b> WITH DIE SET NO.DIE-1322 WITH DIE INDEX NO:12-10	1000
	LBNB5-4.6	LBN5-4.6	.181 4.6	.677 17.2	.913 23.2	.236 6.0	.220 5.6	.134 3.4		.106 2.7	.039 1.0		1000

UL cUL ALL LISTED

**NON-INSULATED  
PIN TERMINALS**



**MAXIMUM ELECTRIC CURRENT:**

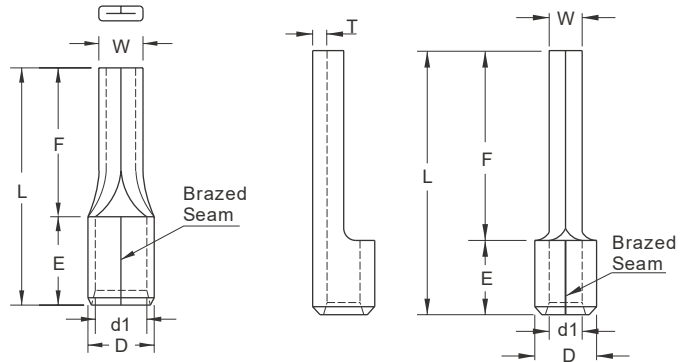
A.W.G.	26	24	22	20	18	16	14	12
AMP.	5.5	7	9	12	17	18	30	35
A.W.G.	10	8	6	4	2			
AMP.	50	70	95	125	170			

**TERMINAL MATERIAL: COPPER**

WIRE RANGE A.W.G. mm <sup>2</sup>	ITEM NO.		DIMENSION <small>inch mm</small>							CRIMPING TOOL	Q'TY BOX
	BRAZED SEAM	BUTTED SEAM	W	F	L	E	D	d1	T		
26-22 A.W.G. 0.2-0.5 mm <sup>2</sup>	PTNB0.5-9	PTN0.5-9	.055 1.4	.394 10.0	.551 14.0	.157 4.0	.087 2.2	.039 1.0	.020 0.5	IZUMI MODEL KSTHT-203 WITH DIE INDEX NO: INSUL 16-22	1000
22-16 A.W.G. 0.5-1.5 mm <sup>2</sup>	PTNB1-7	PTN1-7	.075 1.9	.276 7.0	.465 11.8	.189 4.8	.134 3.4	.067 1.7	.030 0.75	IZUMI MODEL 5N18 WITH DIE INDEX NO:1.25 OR K.S. MODEL KST2000D-1322 LY-2045A WITH DIE INDEX NO:1.25	1000
	PTNB1-9	PTN1-9		.354 9.0	.543 13.8						1000
	PTNB1-10	PTN1-10		.394 10.0	.583 14.8						1000
	PTNB1-12	PTN1-12		.472 12.0	.661 16.8						1000
	PTNB1-13	PTN1-13		.512 13.0	.701 17.8						1000
	PTNB1-14	PTN1-14		.551 14.0	.740 18.8						1000
	PTNB1-16	PTN1-16		.630 16.0	.819 20.8						1000
-	PTN1-18	.709 18.0	.898 22.8	1000							
16-14 A.W.G. 1.5-2.5 mm <sup>2</sup>	PTNB2-4.5	PTN2-4.5	.075 1.9	.177 4.5	.366 9.3	.189 4.8	.161 4.1	.091 2.3	.031 0.8	IZUMI MODEL 5N18 WITH DIE INDEX NO:2 OR K.S. MODEL KST2000D-1322 LY-245A WITH DIE INDEX NO:2	1000
	PTNB2-9	PTN2-9		.354 9.0	.543 13.8						1000
	PTNB2-10	PTN2-10		.394 10.0	.583 14.8						1000
	PTNB2-12	PTN2-12		.472 12.0	.661 16.8						1000
	PTNB2-13	PTN2-13		.512 13.0	.701 17.8						1000
	PTNB2-14	PTN2-14		.551 14.0	.740 18.8						1000
	PTNB2-16	PTN2-16		.630 16.0	.827 21.0						1000
-	PTN2-18	.709 18.0	.898 22.8	1000							
12-10 A.W.G. 2.5-6 mm <sup>2</sup>	PTNB5-10	PTN5-10	.110 2.8	.394 10.0	.669 17.0	.236 6.0	.220 5.6	.134 3.4	.039 1.0	IZUMI MODEL 5N18 WITH DIE INDEX NO:5.5 OR K.S. MODEL KST2000D-1322 WITH DIE INDEX NO:12-10	1000
	PTNB5-13	PTN5-13		.551 14.0	.787 20.0						1000
8 A.W.G. 10 mm <sup>2</sup>	PTNB10-12		.169 4.3	.551 14.0	.886 22.0	.315 8.0	.272 6.9	.177 4.5	.043 1.1	IZUMI MODEL 5N18 WITH DIE INDEX NO:8	1000
6 A.W.G. 16 mm <sup>2</sup>	PTNB16-13		.217 5.5	.630 16.0	1.024 26.0	.394 10.0	.331 8.4	.228 5.8	.047 1.2	IZUMI MODEL 9H-60 WITH DIE INDEX NO:14	500
4 A.W.G. 25 mm <sup>2</sup>	PTNB25-15		.268 6.8	.787 20.0	1.319 33.5	.531 13.5	.374 9.5	.276 7.0	.047 1.2	K.S. MODEL LY-2045E WITH DIE INDEX NO:25	400
2 A.W.G. 35 mm <sup>2</sup>	PTNB35-20		.315 8.0	.965 24.5	1.594 40.5	.630 16.0	.465 11.8	.331 8.4	.059 1.5	K.S. MODEL KH-120 WITH DIE INDEX NO:35	200

UL cUL ALL LISTED  
⊙: NOT UL AND C-UL LISTED

**NON-INSULATED  
PIN TERMINALS**



**MAXIMUM ELECTRIC CURRENT:**

A.W.G.	1/0	2/0	3/0	4/0	250
AMP.	230	265	310	360	405

**TERMINAL MATERIAL: COPPER**

WIRE RANGE A.W.G. mm <sup>2</sup>	ITEM NO.		DIMENSION inch mm							CRIMPING TOOL	Q'TY BOX
	BRAZED SEAM	BUTTED SEAM	W	F	L	E	D	d1	T		
1/0 A.W.G. 50 mm <sup>2</sup>	PTNB50-20		.374 9.5	1.024 26.0	1.772 45.0	.748 19.0	.535 13.6	.378 9.6	.098 1.8	K.S. MODEL <b>KH-120</b> WITH DIE INDEX NO:50	100
	PTNB50-25		.374 9.5	.984 25.0							
2/0 A.W.G. 70 mm <sup>2</sup>	PTNB70-25		.433 11.0	1.220 31.0	2.165 55.0	.945 24.0	.622 15.8	.449 11.4	.079 2.0	K.S. MODEL <b>KH-120</b> WITH DIE INDEX NO:70	50
3/0 A.W.G. 95 mm <sup>2</sup>	PTNB95-25		.492 12.5	1.220 31.0	2.165 55.0	.945 24.0	.744 18.9	.531 13.5	.098 2.5	K.S. MODEL <b>KH-120</b> WITH DIE INDEX NO:95	50
4/0-250MCM 100-120mm <sup>2</sup>	PTNB120-27		.551 14.0	1.063 27.0	2.283 58.0	.866 22.0	.886 22.5	.650 16.5	.118 3.0		



ALL LISTED

⊙ : NOT UL AND C-UL LISTED