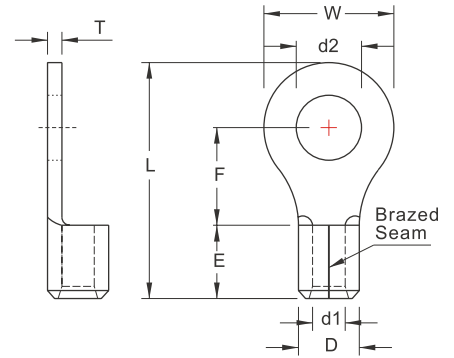


**NON-INSULATED
RING TERMINALS**



MAXIMUM ELECTRIC CURRENT:

A.W.G.	22	20	18	16
AMP.	9	12	17	18

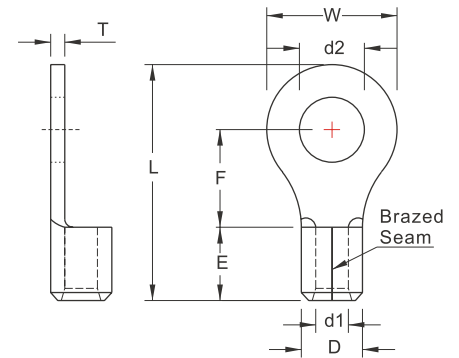
TERMINAL MATERIAL: COPPER
SURFACE TREATMENT: TIN PLATED

WIRE RANGE A.W.G. mm ²	ITEM NO.		STUD SIZE		DIMENSION <small>inch mm</small>						CRIMPING TOOL	Q'TY BOX	
	BRAZED SEAM	BUTTED SEAM	d2		W	F	L	E	D	d1			T
22-16 A.W.G.	RNB1-2	RN1-2	#2	.087 2.2		.197 5.0	.476 12.1					IZUMI MODEL 5N18 WITH DIE INDEX NO.:1-25 OR K.S. MODEL KST2000D-1322 WITH DIE INDEX NO.:22-18 OR K.S. MODEL KM-70L WITH DIE SET NO: DIE-1322 WITH DIE INDEX NO.:22-18	1000
	RNB1-2.5	RN1-2.5	#2	.095 2.4	.217 5.5	.189 4.8	.488 12.4						1000
	RNB1-3.2 ■*	RN1-3.2	#4	.126 3.2		.197 5.0	.492 12.5						1000
	RNBL1-3.2	RNL1-3.2	#4	.126 3.2	.315 8.0	.276 7.0	.622 15.8						1000
	RNBS1-3.7 *	RNS1-3.7	#6	.146 3.7	.217 5.5	.197 5.0	.492 12.5						1000
	RNB1-3.7 *	RNM1-3.7	#6	.146 3.7	.260 6.6	.248 6.3	.567 14.4						1000
	RNBL1-3.7 *	RNL1-3.7	#6	.146 3.7	.315 8.0	.276 7.0	.622 15.8						1000
	RNBS1-4 ■*	RNS1-4	#8	.169 4.3	.260 6.6	.248 6.3	.567 14.4						1000
	RNBL1-4 ■*	RNL1-4	#8	.169 4.3	.315 8.0	.276 7.0	.622 15.8						1000
	RNB1-5 ■*	RN1-5	#10	.209 5.3							.030 0.75		1000
0.5-1.5 mm ²	RNBL1-5	RNL1-5	#10	.209 5.3				.189 4.8	.134 3.4	.067 1.7		1000	
	RNB1-6 ■*	RN1-6	1/4	.252 6.4	.457 11.6	.433 11.0	.858 21.8					1000	
	RNB1-7	RN1-7	5/16	.291 7.4								1000	
	RNB1-8 *	RN1-8	5/16	.331 8.4								1000	
	RNBL1-8	RNL1-8	5/16	.331 8.4	.535 13.6	.547 13.9	1.004 25.5					1000	
	RNB1-10 *	RN1-10	3/8	.413 10.5								1000	
	RNBL1-10	RNL1-10	3/8	.413 10.5		.630 16.0	1.197 30.4					1000	
	RNB1-12	RN1-12	1/2	.512 13.0	.756 19.2							1000	
	RNB1-13	RN1-13	17/32	.551 14.0		.543 13.8						1000	
	RNB1-14	RN1-14	9/16	.591 15.0								1000	
RNB1-16	RN1-16	5/8	.669 17.0	1.063 27.0	.827 21.0	1.547 39.3				.031 0.8	1000		
RNB1-20	RN1-20	3/4	.827 21.0								1000		

UL cUL ALL LISTED
* : ADDITIONAL SP CERTIFIED
■ : 90D available

Products can be bend to 90-degrees angle.

**NON-INSULATED
RING TERMINALS**



MAXIMUM ELECTRIC CURRENT:

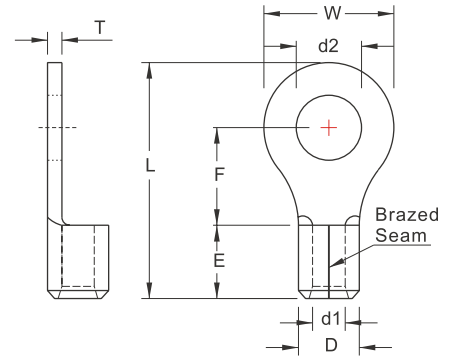
A.W.G.	16	14
AMP.	18	30

TERMINAL MATERIAL: COPPER

SURFACE TREATMENT: TIN PLATED

WIRE RANGE A.W.G. mm ²	ITEM NO.		STUD SIZE		DIMENSION <small>inch mm</small>						CRIMPING TOOL	Q'TY BOX	
	BRAZED SEAM	BUTTED SEAM	d2		W	F	L	E	D	d1			T
16-14 A.W.G.	RNB2-2	RN2-2	#2	.087 2.2	.260 6.6	.189 4.8	.504 12.8	.189 4.8	.161 4.1	.091 2.3	.031 0.8	IZUMI MODEL 5N18 WITH DIE INDEX NO.:2 OR K.S. MODEL KST2000D-1322 WITH DIE INDEX NO.:16-14 OR K.S. MODEL KM-70L WITH DIE SET NO.:DIE-1322 WITH DIE INDEX NO.:16-14	1000
	RNB2-2.5 *	RN2-2.5 *	#3	.098 2.5									
	RNBS2-3.2	RNS2-3.2	#4	.126 3.2	.217 5.5	.220 5.6	.520 13.2						1000
	RNB2-3.2 ■*	RN2-3.2	#4	.126 3.2	.260 6.6	.189 4.8	.504 12.8						1000
	RNBL2-3.2 ■	RNL2-3.2	#4	.126 3.2	.335 8.5	.307 7.8	.661 16.8						1000
	RNBS2-3.7 *	RNS2-3.7	#6	.146 3.7	.260 6.6	.189 4.8	.504 12.8						1000
	RNBM2-3.7 *	RNM2-3.7	#6	.146 3.7		.248 6.3	.567 14.4						1000
	RNBL2-3.7 *	RNL2-3.7	#6	.146 3.7	.335 8.5	.291 7.4	.650 16.5						1000
	RNBS2-4 ■*	RNS2-4	#8	.169 4.3	.260 6.6	.248 6.3	.567 14.4						1000
	RNB2-4	RN2-4	#8	.169 4.3	.335 8.5	.291 7.4	.650 16.5						1000
RNBL2-4 ■*	RNL2-4	#8	.169 4.3	.335 8.5		.650 16.5	1000						
RNBS2-5 ■*	RNS2-5	#10	.209 5.3			.291 7.4	.669 17.0	1000					
1.5-2.5 mm ²	RNBL2-5 ■*	RNL2-5	#10	.209 5.3	.374 9.5			1000					
	RNB2-6 ■*	RN2-6	1/4	.252 6.4				1000					
	RNB2-7 *	RN2-7 *	5/16	.291 7.4	.472 12.0	.433 11.0	.858 21.8	1000					
	RNB2-8 ■*	RN2-8	5/16	.331 8.4				1000					
	RNBL2-8	RNL2-8	5/16	.331 8.4				1000					
	RNB2-9	RN2-9	5/16	.386 9.8	.535 13.6	.547 13.9	1.004 25.5	1000					
	RNB2-10 ■*	RN2-10	3/8	.413 10.5				1000					
	RNBL2-10	RNL2-10	3/8	.413 10.5	.756 19.2	.630 16.0	1.197 30.4	1000					
	RNB2-12	RN2-12	1/2	.512 13.0	.756 19.2			1000					
	RNB2-14	RN2-14	9/16	.591 15.0				1000					
RNB2-16	RN2-16	5/8	.669 17.0	1.063 27.0	.827 21.0	1.547 39.3	1000						
RNB2-20	RN2-20	3/4	.827 21.0				1000						

NON-INSULATED RING TERMINALS



MAXIMUM ELECTRIC CURRENT:

A.W.G.	14	12	10
AMP.	30	35	50

TERMINAL MATERIAL: COPPER
SURFACE TREATMENT: TIN PLATED

WIRE RANGE A.W.G. mm ²	ITEM NO.		STUD SIZE	DIMENSION <small>inch mm</small>							CRIMPING TOOL	Q'TY BOX	
	BRAZED SEAM	BUTTED SEAM		d2	W	F	L	E	D	d1			T
14-12 A.W.G. 2.5-4 mm ²	RNBS3-3.2	RNS3-3.2	#4	.126 3.2	.217 5.5		.661 16.8	.236 6.0	.201 5.1	.114 2.9	.039 1.0	IZUMI MODEL 5N18 WITH DIE INDEX NO.:5.5 OR K.S. MODEL KST2000D-1322 WITH DIE INDEX NO.:12-10 OR K.S. MODEL KM-70L WITH DIE SET NO: DIE-1322 WITH DIE INDEX NO.:12-10	1000
	RNB3-3.2 ■	RN3-3.2	#4	.126 3.2	.315 8.0		.709 18.0						1000
	RNBS3-4	RNS3-4	#8	.169 4.3	.283 7.2	.315 8.0	.693 17.6						1000
	RNB3-4 ■	RN3-4	#8	.169 4.3	.315 8.0		.709 18.0						1000
	RNBS3-5	RNS3-5	#10	.209 5.3	.374 9.5	.362 9.2	.787 20.0						1000
	RNB3-5	RN3-5	#10	.209 5.3	.374 9.5	.362 9.2	.787 20.0						1000
	RNBL3-5	RNL3-5	#10	.209 5.3	.472 12.0	.370 9.4	.843 21.4						1000
	RNB3-6	RN3-6	1/4	.252 6.4									1000
	RNB3-8	RN3-8	5/16	.331 8.4	.591 15.0	.524 13.3	1.063 27.0						1000
	RNB3-10	RN3-10	3/8	.413 10.5									1000
RNB3-12	RN3-12	1/2	.512 13.0	.756 19.2	.630 16.0	1.244 31.6	1000						
12-10 A.W.G. 4-6 mm ²	RNB5-3.2 ■	RN5-3.2	#4	.126 3.2	.283 7.2	.228 5.8	.610 15.5	.236 6.0	.220 5.6	.134 3.4	.039 1.0	IZUMI MODEL 5N18 WITH DIE INDEX NO.:5.5 OR K.S. MODEL KST2000D-1322 WITH DIE INDEX NO.:12-10 OR K.S. MODEL KM-70L WITH DIE SET NO: DIE-1322 WITH DIE INDEX NO.:12-10	1000
	RNB5-3.7 ■*	RN5-3.7	#6	.146 3.7		.240 6.1	.618 15.7						1000
	RNBL5-3.7	RNL5-3.7	#6	.146 3.7	.374 9.5	.327 8.3	.748 19.0						1000
	RNBS5-4 ■*	RNS5-4	#8	.169 4.3	.283 7.2	.240 6.1	.618 15.7						1000
	RNBL5-4 ■*	RNL5-4	#8	.169 4.3	.374 9.5	.327 8.3	.748 19.0						1000
	RNB5-5 ■*	RN5-5 ■	#10	.209 5.3	.374 9.5	.327 8.3	.748 19.0						1000
	RNBL5-5	RNL5-5	#10	.209 5.3	.488 12.4	.496 12.6	.976 24.8						1000
	RNB5-6 ■*	RN5-6 ■	1/4	.252 6.4		.413 10.5	.886 22.5						1000
	RNB5-6 ■*	RN5-6 ■	1/4	.252 6.4	.472 12.0	.512 13.0	.984 25.0						1000
	RNB5-7	RN5-7	5/16	.291 7.4		.413 10.5	.878 22.3						1000
	RNBS5-8 ※	RNS5-8 ※	5/16	.331 8.4	.591 15.0	.441 11.2	.972 24.7						1000

UL cUL ALL LISTED

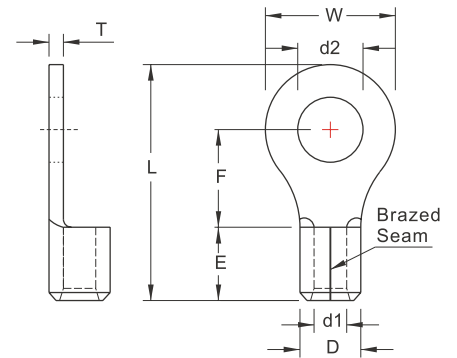
* : ADDITIONAL SF CERTIFIED

※ : DEVELOPING ON DEMAND

■ : 90D available

Products can be bend to 90-degrees angle.

NON-INSULATED RING TERMINALS



MAXIMUM ELECTRIC CURRENT:

A.W.G.	12	10	8
AMP.	35	50	70

TERMINAL MATERIAL: COPPER

SURFACE TREATMENT: TIN PLATED

WIRE RANGE A.W.G. mm ²	ITEM NO.		STUD SIZE	DIMENSION <small>inch mm</small>							CRIMPING TOOL	Q'TY BOX	
	BRAZED SEAM	BUTTED SEAM	d2	W	F	L	E	D	d1	T			
12-10 A.W.G. 4-6 mm ²	RNB5-8 ■ *	RN5-8 ■	5/16	.331 8.4	.591 15.0	.524 13.3	1.055 26.8	.236 6.0	.220 5.6	.134 3.4	.039 1.0	IZUMI MODEL 5N18 WITH DIE INDEX NO.:5.5 OR K.S. MODEL KST2000D-1322 WITH DIE INDEX NO.:12-10 OR K.S. MODEL KM-70L WITH DIE SET NO.:DIE-1322 WITH DIE INDEX NO.:12-10	1000
	RNBS5-10	RNS5-10	3/8	.413 10.5	.591 15.0	.441 11.2	0.972 24.7						1000
	RNB5-10 ■ *	RN5-10	3/8	.413 10.5	.591 15.0	.524 13.3	1.055 26.8						1000
	RNB5-11	RN5-11	7/16	.453 11.5									1000
	RNB5-12 *	RN5-12	1/2	.512 13.0	.756 19.2	.630 16.0	1.244 31.6						500
	RNB5-13	RN5-13	1/2	.551 14.0									500
	RNB5-14	RN5-14	9/16	.591 15.0									500
	RNB5-16	RN5-16	5/8	.669 17.0	1.260 32.0	.992 25.2	1.858 47.2						500
	RNB5-18	RN5-18	11/16	.748 19.0									500
	RNB5-20	RN5-20	3/4	.827 21.0									500
8 A.W.G. 8 mm ²	RNB8-3.7		#6	.146 3.7	.315 8.0		.846 21.5	.335 8.5	.283 7.2	.177 4.5	.047 1.2	IZUMI MODEL 5N18 WITH DIE INDEX NO.:8 OR K.S. MODEL KST2000D-1322 WITH DIE INDEX NO.:8 OR K.S. MODEL KM-70L WITH DIE SET NO.:DIE-1322 WITH DIE INDEX NO.:8	500
	RNBS8-4 ■		#8	.169 4.3		.366 9.3							500
	RNBL8-4		#8	.169 4.3	.472 12.0		.937 23.8						500
	RNBS8-5 ■		#10	.209 5.3	.346 8.8	.429 10.5	.921 23.4						500
	RNBM8-5 *		#10	.209 5.3	.472 12.0	.366 9.3	.937 23.8						500
	RNBL8-5		#10	.209 5.3	.591 15.0	.543 13.8	1.173 29.8						500
	RNBS8-6 ■ *		1/4	.252 6.4	.472 12.0	.366 9.3	.937 23.8						500
	RNBL8-6 ■		1/4	.252 6.4									500
	RNB8-8 ■ *		5/16	.331 8.4	.591 15.0	.535 13.6	1.150 29.2						500
	RNB8-10 ■ *		3/8	.413 10.5									500
	RNB8-11		7/16	.453 11.5	.787 20.0	.591 15.0	1.319 33.5						500
	RNB8-12 ■		1/2	.512 13.0									500

UL cUL ALL LISTED

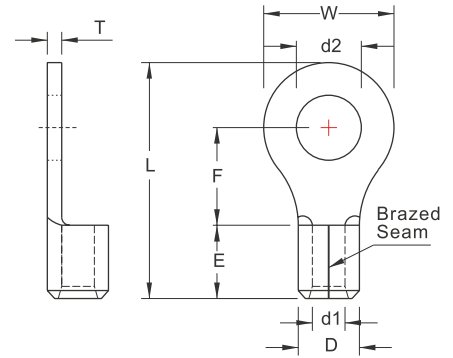
* : ADDITIONAL CERTIFIED

※ : DEVELOPING ON DEMAND

■ : 90D available

Products can be bend to 90-degrees angle.

NON-INSULATED RING TERMINALS



MAXIMUM ELECTRIC CURRENT:

A.W.G.	8	6
AMP.	70	95

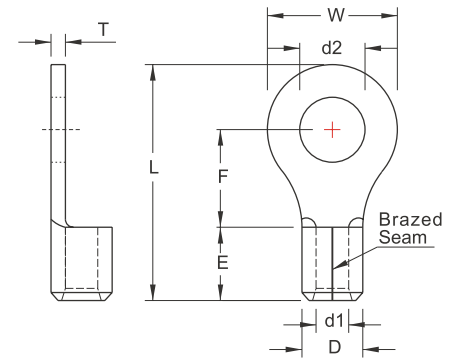
TERMINAL MATERIAL: COPPER
SURFACE TREATMENT: TIN PLATED

WIRE RANGE A.W.G. mm ²	ITEM NO.		STUD SIZE		DIMENSION <small>inch mm</small>							CRIMPING TOOL	Q'TY BOX	
	BRAZED SEAM	BUTTED SEAM	d2		W	F	L	E	D	d1	T			
8 A.W.G. 8 mm ²	RNB8-14		9/16	.591 15.0										500
	RNB8-16		5/8	.669 17.0										500
	RNB8-18		11/16	.748 19.0	1.244 31.6	1.008 25.6	1.949 49.5	.335 8.5	.283 7.2	.177 4.5	.047 1.2			500
	RNB8-20		3/4	.827 21.0										500
	RNB8-22		7/8	.906 23.0										500
6 A.W.G. 14 mm ²	RNB14-4 ■		#8	.169 4.3	.472 12.0			1.150 29.2					IZUMI MODEL 9H-60 (EP-38) WITH DIE INDEX NO.:14 OR K.S. MODEL LY-2045B LY-2045D WITH DIE INDEX NO.:14	500
	RNBS14-5 ■		#10	.209 5.3	.374 9.5			1.110 28.2						500
	RNB14-5 ■		#10	.209 5.3	.472 12.0	.524 13.3		1.150 29.2						500
	RNBSS14-6		1/4	.252 6.4	.374 9.5			1.110 28.2						500
	RNBS14-6 ■*		1/4	.252 6.4	.472 12.0			1.150 29.2						500
	RNBL14-6		1/4	.252 6.4										500
	RNB14-8 ■*		5/16	.331 8.4	.630 16.0	.559 14.2	1.280 32.5	.413 10.5	.354 9.0	.228 5.8	.059 1.5			500
	RNB14-10 ■*		3/8	.431 10.5										500
	RNB14-11		7/16	.453 11.5										250
	RNB14-12		1/2	.512 13.0	.866 22.0	.780 19.8	1.614 41.0							250
RNB14-14		9/16	.591 15.0									250		
RNB14-16		5/8	.669 17.0	1.244 31.6	.996 25.3	2.008 51.0						250		
RNB14-18		11/16	.748 19.0									250		
RNB14-20		3/4	.827 21.0									250		

UL cUL ALL LISTED
* : ADDITIONAL SP CERTIFIED
■ : 90D available

Products can be bend to 90-degrees angle.

**NON-INSULATED
RING TERMINALS**



MAXIMUM ELECTRIC CURRENT:

A.W.G.	4	2
AMP.	125	170

TERMINAL MATERIAL: COPPER

SURFACE TREATMENT: TIN PLATED

WIRE RANGE A.W.G. mm ²	ITEM NO.		STUD SIZE		DIMENSION <small>inch mm</small>							CRIMPING TOOL	Q'TY BOX
	BRAZED SEAM	BUTTED SEAM	d2		W	F	L	E	D	d1	T		
4 A.W.G. 22 mm ²	RNB22-4		#8	.169 4.3	.480 12.2	.594 15.1	1.307 33.2	.465 11.8	.453 11.5	.303 7.7	.067 1.7	IZUMI MODEL 9H-60 (EP-38) WITH DIE INDEX NO.:22 OR K.S. MODEL KH-120 LY-2045E WITH DIE INDEX NO.:22 OR 25	250
	RNBS22-5	■	#10	.209 5.3									
	RNBL22-5		#10	.209 5.3	.650 16.5	.531 13.5	1.319 33.5						250
	RNBS22-6	■	1/4	.252 6.4	.480 12.2	.594 15.1	1.299 33.0						250
	RNBL22-6	■*	1/4	.252 6.4	.650 16.5	.531 13.5	1.319 33.5						250
	RNBS22-8		5/16	.331 8.4	.480 12.2	.594 15.1	1.307 33.2						250
	RNB22-8	■*	5/16	.331 8.4	.650 16.5	.531 13.5	1.319 33.5						250
	RNB22-10	*	3/8	.413 10.5	.689 17.5	.630 16.0	1.445 36.7						250
	RNBL22-10		3/8	.413 10.5	.866 22.0	.776 19.7	1.673 42.5						200
	RNB22-11		7/16	.453 11.5	1.181 30.0	.953 24.2	2.008 51.0						200
	RNB22-12		1/2	.512 13.0									
	RNB22-14		9/16	.591 15.0									200
	RNB22-16		5/8	.669 17.0									200
	RNB22-18		11/16	.748 19.0									200
RNB22-20		3/4	.827 21.0				200						
RNB22-22		7/8	.906 23.0				200						
2 A.W.G. 38 mm ²	RNB38-5		#10	.209 5.3	.602 15.3	.685 17.4	1.535 39.0	.551 14.0	.524 13.3	.370 9.4	.071 1.8	IZUMI MODEL 9H-60 (EP-38) WITH DIE INDEX NO.:38 OR K.S. MODEL KH-120 WITH DIE INDEX NO.:35	200
	RNBS38-6	■*	1/4	.252 6.4									
	RNBL38-6		1/4	.252 6.4	.866 22.0	.697 17.7	1.681 42.7						200
	RNBS38-8	■*	5/16	.331 8.4	.602 15.3	.685 17.4	1.535 39.0						200
	RNBL38-8	■	5/16	.331 8.4	.866 22.0	.697 17.7	1.681 42.7						200



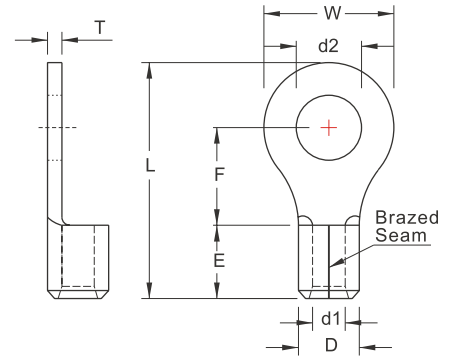
ALL LISTED

* : ADDITIONAL CERTIFIED

■ : 90D available

Products can be bend to 90-degrees angle.

NON-INSULATED RING TERMINALS



MAXIMUM ELECTRIC CURRENT:

A.W.G.	2	1/0
AMP.	170	230

TERMINAL MATERIAL: COPPER
SURFACE TREATMENT: TIN PLATED

WIRE RANGE A.W.G. mm ²	ITEM NO.		STUD SIZE		DIMENSION <small>inch mm</small>							CRIMPING TOOL	Q'TY BOX
	BRAZED SEAM	BUTTED SEAM	d2		W	F	L	E	D	d1	T		
2 A.W.G. 38 mm ²	RNBS38-10 *		3/8	.413 10.5	.602 15.3	.685 17.4	1.527 38.8	0.551 14.0	0.524 13.3	0.370 9.4	0.71 1.8	IZUMI MODEL 9H-60 (EP-38) WITH DIE INDEX NO.:38 OR K.S. MODEL KH-120 WITH DIE INDEX NO.:35	200
	RNBL38-10		3/8	.413 10.5									200
	RNB38-11		7/16	.453 11.5	.866 22.0	.697 17.7	1.681 42.7						200
	RNB38-12 *		1/2	.512 13.0									200
	RNB38-13		9/16	.551 14.0									200
	RNB38-14		9/16	.591 15.0				.551 14.0	.524 13.3	.370 9.4	.071 1.8		200
	RNB38-16		5/8	.669 17.0									200
	RNB38-18		11/16	.748 19.0	1.181 30.0	.917 23.3	2.047 52.0						200
	RNB38-20		3/4	.827 21.0									200
	RNB38-22		7/8	.906 23.0									200
RNB38-24		15/16	.984 25.0								200		
1/0 A.W.G. 60 mm ²	RNB60-6		1/4	.252 6.4								IZUMI MODEL 9H-2 9H-150 12#A WITH DIE INDEX NO.:60 OR K.S. MODEL KH-120 WITH DIE INDEX NO.:50	100
	RNB60-8 ■		5/16	.331 8.4	.866 22.0	.815 20.7	1.957 49.7						100
	RNB60-10 ■		3/8	.413 10.5									100
	RNBL60-10		3/8	.413 10.5	1.260 32.0	.898 22.8	2.264 57.0						100
	RNB60-11		7/16	.453 11.5	.866 22.0	.815 20.7	1.957 49.7						100
	RNB60-12		1/2	.512 13.0									100
	RNBL60-12		1/2	.512 13.0	1.260 32.0	.898 22.8	2.244 57.0	.709 18.0	.606 15.4	.449 11.4	.071 1.8		100
	RNB60-13		9/16	.551 14.0	.866 22.0	.815 20.7	1.957 49.7						100
	RNB60-14		9/16	.591 15.0									100
	RNB60-16		5/8	.669 17.0									100
	RNB60-18		11/16	.748 19.0	1.260 32.0	.925 23.5	2.264 57.5						100
	RNB60-20		3/4	.827 21.0									100
RNB60-22		7/8	.906 23.0								100		

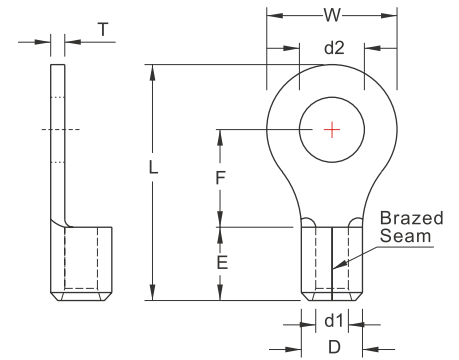


ALL LISTED
* : ADDITIONAL CERTIFIED

■ : 90D available

Products can be bend to 90-degree angle.

**NON-INSULATED
RING TERMINALS**



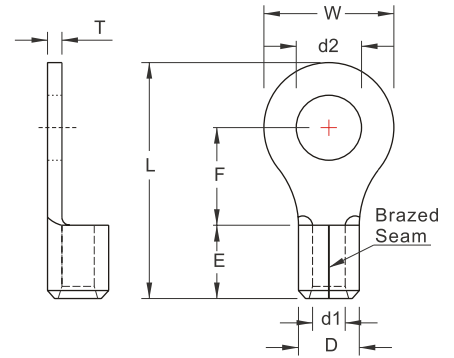
MAXIMUM ELECTRIC CURRENT:

A.W.G.	2/0	3/0
AMP.	265	310

TERMINAL MATERIAL: COPPER
SURFACE TREATMENT: TIN PLATED

WIRE RANGE A.W.G. mm ²	ITEM NO.		STUD SIZE		DIMENSION <small>inch mm</small>							CRIMPING TOOL	Q'TY BOX			
	BRAZED SEAM	BUTTED SEAM	d2		W	F	L	E	D	d1	T					
2/0 A.W.G.	RNB70-6		1/4	.252 6.4	.945 24.0	.787 20.0	1.969 50.0	.709 18.0	.689 17.5	.524 13.3	.079 2.0	IZUMI MODEL 9H-2 9H-150 12#A WITH DIE INDEX NO.:70 OR K.S. MODEL KH-150 WITH DIE INDEX NO.:70	100			
	RNB70-8		5/16	.331 8.4									100			
	RNB70-10		3/8	.413 10.5									100			
	RNB70-11		7/16	.453 11.5									100			
	RNB70-12		1/2	.512 13.0									100			
	RNB70-13		9/16	.551 14.0									100			
	RNB70-14		9/16	.591 15.0									100			
	RNB70-16		5/8	.669 17.0									100			
	RNB70-18		11/16	.748 19.0									1.260 32.0	1.024 26.0	2.402 61.0	100
	RNB70-20		3/4	.827 21.0									100			
RNB70-22		7/8	.906 23.0	100												
3/0 A.W.G.	RNB80-6		1/4	.252 6.4	1.063 27.0	.815 20.7	2.134 54.2	.787 20.0	.768 19.5	.571 14.5	.091 2.3	IZUMI MODEL 9H-2 9H-150 12#A WITH DIE INDEX NO.:80 OR K.S. MODEL KH-150 WITH DIE INDEX NO.:95	50			
	RNB80-8		5/16	.331 8.4									50			
	RNB80-10		3/8	.413 10.5									50			
	RNBL80-10		3/8	.413 10.5									1.260 32.0	1.260 32.0	2.677 68.0	50
	RNB80-11		7/16	.453 11.5									50			
	RNB80-12		1/2	.512 13.0									50			
	RNBL80-12		1/2	.512 13.0									1.260 32.0	1.260 32.0	2.677 68.0	50
	RNB80-13		9/16	.551 14.0									1.063 27.0	.815 20.7	2.134 54.2	50
	RNB80-14		9/16	.591 15.0									50			
	RNB80-16		5/8	.669 17.0									50			
	RNB80-18		11/16	.748 19.0									1.260 32.0	1.260 32.0	2.677 68.0	50
	RNB80-20		3/4	.827 21.0									50			
RNB80-22		7/8	.906 23.0	50												

NON-INSULATED RING TERMINALS



MAXIMUM ELECTRIC CURRENT:

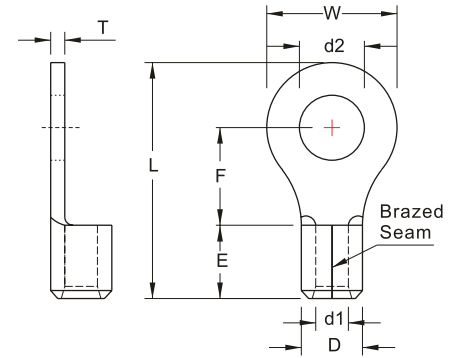
A.W.G.	4/0	250
AMP.	360	405

TERMINAL MATERIAL: COPPER
SURFACE TREATMENT: TIN PLATED

WIRE RANGE A.W.G. mm ²	ITEM NO.		STUD SIZE	DIMENSION <small>inch mm</small>							CRIMPING TOOL	Q'TY BOX	
	BRAZED SEAM	BUTTED SEAM	d2	W	F	L	E	D	d1	T			
4/0 A.W.G. 360 mm ²	RNB100-6		1/4	.252 6.4								IZUMI MODEL 9H-2 9H-150 12#A WITH DIE INDEX NO.:100 OR K.S. MODEL KH-150 WITH DIE INDEX NO.:120	50
	RNB100-8		5/16	.331 8.4	1.122 28.5	.803 20.4	2.189 55.6						50
	RNB100-10		3/8	.413 10.5									50
	RNBL100-10		3/8	.413 10.5	1.260 32.0	1.260 32.0	2.717 69.0						50
	RNB100-11		7/16	.453 11.5	1.122 28.5	.803 20.4	2.189 55.6						50
	RNB100-12		1/2	.512 13.0				.827 21.0	.870 22.1	.646 16.4	.106 2.7		50
	RNBL100-12		1/2	.512 13.0									50
	RNB100-14		9/16	.591 15.0									50
	RNB100-16		5/8	.669 17.0	1.260 32.0	1.260 32.0	2.717 69.0						50
	RNB100-18		11/16	.748 19.0									50
	RNB100-20		3/4	.827 21.0									50
RNB100-22		7/8	.906 23.0								50		
250 MCM 125 mm ²	RNB125-10		3/8	.453 10.5								50	
	RNB125-12		1/2	.512 13.0	1.181 30.0	.866 22.0	2.362 60.0	.866 22.0	.902 22.9	.689 17.5	.106 2.7	50	
	RNB125-16		5/8	.669 17.0								50	
250/300 MCM 150 mm ²	RNB150-8		5/16	.331 8.4		.906 23.0	2.598 66.0					IZUMI MODEL 9H-2 9H-150 12#A WITH DIE INDEX NO.:150 OR K.S. MODEL KSTP-150D WITH DIE INDEX NO.:150	25
	RNBL150-8		5/16	.331 8.4		1.417 36.0	3.189 81.0						25
	RNB150-10		3/8	.413 10.5		.906 23.0	2.598 66.0						25
	RNBL150-10		3/8	.453 10.5	1.417 36.0	1.417 36.0	3.189 81.0	1.063 27.0	1.047 26.6	.768 19.5	.126 3.2		25
	RNB150-11		7/16	.453 11.5		.906 23.0	2.598 66.0						25
	RNB150-12		1/2	.512 13.0		1.417 36.0	3.189 81.0						25
	RNBL150-12		1/2	.512 13.0		1.417 36.0	3.189 81.0						25
	RNB150-14		9/16	.591 15.0		.906 23.0	2.598 66.0						25

UL cUL ALL LISTED

**NON-INSULATED
RING TERMINALS**



MAXIMUM ELECTRIC CURRENT:

A.W.G.	250	300	350
AMP.	405	445	505

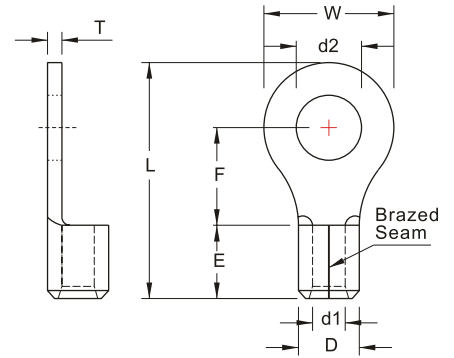
TERMINAL MATERIAL: COPPER

SURFACE TREATMENT: TIN PLATED

WIRE RANGE A.W.G. mm ²	ITEM NO.		STUD SIZE		DIMENSION <small>inch mm</small>							CRIMPING TOOL	Q'TY BOX		
	BRAZED SEAM	BUTTED SEAM	d2		W	F	L	E	D	d1	T				
250/300 MCM 150 mm ²	RNBL150-14		9/16	.591 15.0	1.417 36.0	.906 23.0	3.189 81.0	1.063 27.0	1.047 26.6	.768 19.5	.126 3.2	IZUMI MODEL 9H-2 9H-150 12#A WITH DIE INDEX NO.:150 OR K.S. MODEL KSTP-150D WITH DIE INDEX NO.:150	25		
	RNB150-16		5/8	.669 17.0			2.598 66.0						25		
	RNBL150-16		5/8	.669 17.0			25								
	RNB150-18		11/16	.748 19.0			3.189 81.0						25		
	RNB150-20		3/4	.827 21.0			25								
	RNB150-22		7/8	.906 23.0			25								
	RNB150-24		15/16	.984 25.0			25								
	RNB150-27		1	1.102 28.0			25								
300/350 MCM 180 mm ²	RNB180-6		1/4	.252 6.4	1.516 38.5	.965 24.5	2.717 69.0	1.122 28.5	1.126 28.6	.827 21.0	.138 3.5	IZUMI MODEL 12K-1 12#A WITH DIE INDEX NO.:180 OR K.S. MODEL KSTP-150D WITH DIE INDEX NO.:180	10		
	RNB180-8		5/16	.331 8.4									10		
	RNB180-10		3/8	.413 10.5									10		
	RNB180-11		7/16	.453 11.5									10		
	RNB180-12		1/2	.512 13.0									10		
	RNBL180-12		1/2	.512 13.0									1.535 39.0	3.409 86.6	10
	RNB180-14		9/16	.591 15.0									10		
	RNB180-16		5/8	.669 17.0									10		
	RNBL180-16		5/8	.669 17.0									10		
	RNB180-18		11/16	.748 19.0									10		
	RNB180-20		3/4	.827 21.0									1.535 39.0	3.409 86.6	10
	RNB180-22		7/8	.906 23.0									10		
	RNB180-24		15/16	.984 25.0									10		
	RNB180-27		1	1.102 28.0									10		

ALL LISTED

NON-INSULATED RING TERMINALS



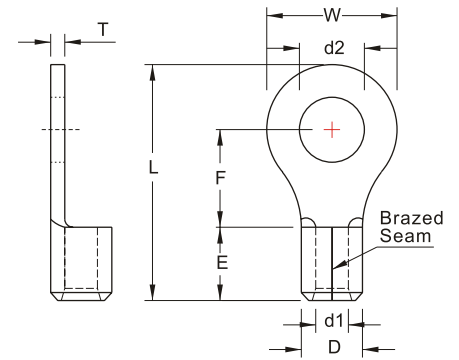
MAXIMUM ELECTRIC CURRENT:

A.W.G.	400	500	600
AMP.	545	620	690

TERMINAL MATERIAL: COPPER
SURFACE TREATMENT: TIN PLATED

WIRE RANGE A.W.G. mm ²	ITEM NO.		STUD SIZE		DIMENSION <small>inch mm</small>						CRIMPING TOOL	Q'TY BOX			
	BRAZED SEAM	BUTTED SEAM	d2	W	F	L	E	D	d1	T					
400/500 MCM 200 mm ²	RNB200-8		5/16	.331 8.4	1.732 44.0	.965 24.5	2.835 72.0	1.240 31.5	1.283 32.6	.945 24.0	.157 4.0	IZUMI MODEL 12K-1 12#A WITH DIE INDEX NO.:200 OR K.S. MODEL KSTP-325 WITH DIE INDEX NO.:240	10		
	RNBL200-8		5/16	.331 8.4		1.437 36.5	3.555 90.3						10		
	RNB200-10		3/8	.413 10.5		.965 24.5	2.835 72.0						10		
	RNBL200-10		3/8	.413 10.5		1.437 36.5	3.555 90.3						10		
	RNB200-11		7/16	.453 11.5		.965 24.5	2.835 72.0						10		
	RNB200-12		1/2	.512 13.0		1.437 35.5	3.555 90.3						10		
	RNBL200-12		1/2	.512 13.0		1.437 35.5	3.555 90.3						10		
	RNB200-14		9/16	.591 15.0		.965 24.5	2.835 72.0						10		
	RNB200-16		5/8	.669 17.0		1.437 36.5	3.555 90.3						10		
	RNBL200-16		5/8	.669 17.0		1.437 36.5	3.555 90.3						10		
	RNB200-18		11/16	.748 19.0									10		
	RNB200-20		3/4	.827 21.0									10		
	RNB200-22		7/8	.906 23.0		1.732 44.0	1.437 37.5						3.583 91.0	10	
	RNB200-24		15/16	.984 25.0									10		
RNB200-27		1	1.102 28.0			10									
400/500 MCM 200 mm ²	RNB250-10		3/8	.413 10.5	1.732 44.0	.965 24.5	2.835 72.0	1.240 31.5	1.287 32.7	.945 24.0	.157 4.0		5		
	RNB250-12		1/2	.512 13.0									5		
	RNB250-16		5/8	.669 17.0									5		
500/600 MCM 325 mm ²	RNB325-8		5/16	.331 8.4	1.988 50.5	1.319 33.5	3.465 88.0	1.398 35.5	1.480 37.6	1.102 28.0	.169 4.3	IZUMI MODEL 12K-1 12#A WITH DIE INDEX NO.:325 OR K.S. MODEL KSTP-325 WITH DIE INDEX NO.:400	5		
	RNB325-10		3/8	.413 10.5									5		
	RNBL325-10		3/8	.413 10.5									1.772 45.0	4.154 105.5	5
	RNB325-11		7/16	.453 11.5									1.319 33.5	3.465 88.0	5
	RNB325-12		1/2	.512 13.0									1.319 33.5	3.465 88.0	5
	RNBL325-12		1/2	.512 13.0									1.772 45.0	4.154 105.5	5

NON-INSULATED RING TERMINALS



MAXIMUM ELECTRIC CURRENT:

A.W.G.	500	600
AMP.	620	690

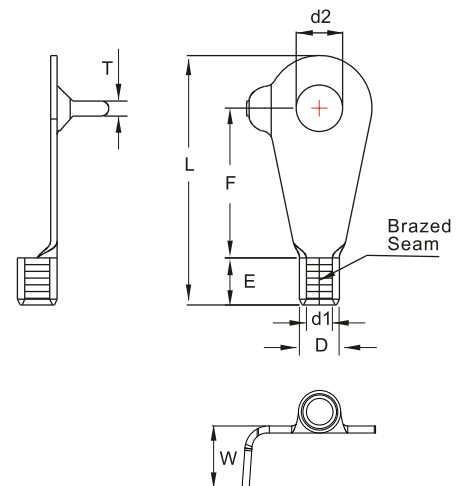
TERMINAL MATERIAL: COPPER
SURFACE TREATMENT: TIN PLATED

WIRE RANGE A.W.G. mm ²	ITEM NO.		STUD SIZE		DIMENSION <small>inch mm</small>							CRIMPING TOOL	Q'TY BOX
	BRAZED SEAM	BUTTED SEAM	d2		W	F	L	E	D	d1	T		
500/600 MCM	RNB325-14		9/16	.591 15.0	1.988 50.5	1.319 33.5	3.465 88.0	1.398 35.5	1.480 37.6	1.102 28.0	.169 4.3	IZUMI MODEL 12K-1 12#A WITH DIE INDEX NO:325 OR K.S. MODEL KSTP-325 WITH DIE INDEX NO:400	5
	RNB325-16		5/8	.669 17.0									5
	RNBL325-16		5/8	.669 17.0									5
	RNB325-18		11/16	.748 19.0									5
325 mm ²	RNB325-20		3/4	.827 21.0	1.772 45.0	4.161 105.7	5						
	RNB325-22		7/8	.906 23.0	5								
	RNB325-24		15/16	.984 25.0	5								
	RNB325-27	■	1	1.102 28.0	5								

UL cUL ALL LISTED
* : ADDITIONAL SF CERTIFIED
■ : 90D available

Products can be bend to 90-degrees angle.

NON-INSULATED RING TERMINALS



MAXIMUM ELECTRIC CURRENT:

A.W.G.	8
AMP.	70

TERMINAL MATERIAL: COPPER

WIRE RANGE A.W.G. mm ²	ITEM NO.		STUD SIZE		DIMENSION <small>inch mm</small>							CRIMPING TOOL	Q'TY BOX
	BRAZED SEAM	BUTTED SEAM	d2		W	F	L	E	D	d1	T		
8 A.W.G. 8 mm ²	RNBTL8-8		5/16	.331 8.4	.413 10.5	1.063 27.0	1.772 45.0	.335 8.5	.283 7.2	.185 4.7	.106 2.7	KST2000D-1322	200