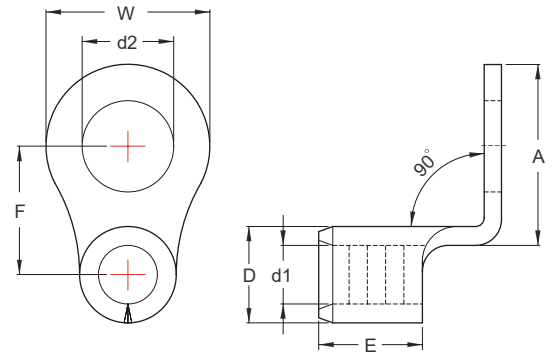


**NON-INSULATED
RING TERMINALS
(RNB-90D SERIES)**



MAXIMUM ELECTRIC CURRENT:

A.W.G.	22	20	18	16	14
AMP.	9	12	17	18	30

TERMINAL MATERIAL: COPPER

WIRE RANGE A.W.G. mm ²	ITEM NO.		STUD SIZE		DIMENSION <small>inch mm</small>						CRIMPING TOOL	Q'TY BOX	
	BRAZED SEAM	BUTTED SEAM	d2		W	F	A	E	D	d1			T
22-16 A.W.G. 0.5-1.5 mm ²	RNB1-3.2-90D [*]	RN1-3.2-90D ^{*Ⓢ}	#4	.126 3.2	.217 5.5	.169 4.3	.244 6.2	.189 4.8	.134 3.4	.067 1.7	.030 0.75	IZUMI MODEL 5N18 WITH DIE INDEX NO.:1.25 OR K.S. MODEL KST2000D-1322 WITH DIE INDEX NO.:22-18	1000
	RNBS1-4-90D [Ⓢ]	RNS1-4-90D [Ⓢ]	#8	.169 4.3	.260 6.6	.232 5.9	.323 8.2						1000
	RNBL1-4-90D	RNL1-4-90D [Ⓢ]	#8	.169 4.3	.315 8.0	.287 7.3	.406 10.3						1000
	RNB1-5-90D	RN1-5-90D [Ⓢ]	#10	.209 5.3		.276 7.0	.394 10.0						1000
	RNB1-6-90D	RN1-6-90D [Ⓢ]	1/4	.252 6.4	.457 11.6	.433 11.0	.630 16.0						1000
16-14 A.W.G. 1.5-2.5 mm ²	RNB2-3.2-90D	RN2-3.2-90D	#4	.126 3.2	.260 6.6	.209 5.3	.291 7.4	.189 4.8	.161 4.1	.091 2.3	.031 0.8	IZUMI MODEL 5N18 WITH DIE INDEX NO.:2 OR K.S. MODEL KST2000D-1322 WITH DIE INDEX NO.:16-14	1000
	RNBL2-3.2-90D	RNL2-3.2-90D	#4	.126 3.2	.335 8.5	.307 7.8	.437 11.1						1000
	RNBS2-4-90D [Ⓢ]	RNS2-4-90D [Ⓢ]	#8	.169 4.3	.260 6.6	.244 6.2	.323 8.2						1000
	RNBL2-4-90D	RNL2-4-90D [Ⓢ]	#8	.169 4.3	.335 8.5	.272 6.9	.394 10.0						1000
	RNBS2-5-90D	RNS2-5-90D [Ⓢ]	#10	.209 5.3		.311 7.9	.433 11.0						1000
	RNBL2-5-90D	RNL2-5-90D	#10	.209 5.3	.374 9.5	.287 7.3	.429 10.9						1000
	RNB2-6-90D	RN2-6-90D [Ⓢ]	1/4	.252 6.4	.472 12.0	.413 10.5	.606 15.4						1000
	RNB2-8-90D	RN2-8-90D [Ⓢ]	5/16	.331 8.4		.732 18.6	1000						
RNB2-10-90D	RN2-10-90D [Ⓢ]	3/8	.413 10.5	.535 13.6	.472 12.0	.732 18.6	1000						

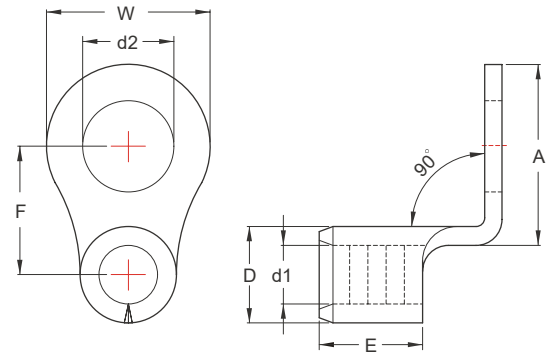


ALL LISTED

Ⓢ : NOT UL AND C-UL LISTED

* : DEVELOPING ON DEMAND

**NON-INSULATED
RING TERMINALS
(RNB-90D SERIES)**



MAXIMUM ELECTRIC CURRENT:

A.W.G.	12	10
AMP.	35	50

TERMINAL MATERIAL: COPPER

WIRE RANGE A.W.G. mm ²	ITEM NO.		STUD SIZE		DIMENSION <small>inch mm</small>							CRIMPING TOOL	Q'TY BOX
	BRAZED SEAM	BUTTED SEAM		d2	W	F	A	E	D	d1	T		
12-10 A.W.G.	RNB5-3.2-90D	RN5-3.2-90D [Ⓢ]	#4	.126 3.2	.283 7.2	.252 6.4	.327 8.3	.236 6.0	.220 5.6	.134 3.4	.039 1.0	IZUMI MODEL 5N18 WITH DIE INDEX NO.:5.5 OR K.S. MODEL KST2000D-1322 WITH DIE INDEX NO.:12-10	1000
	RNB5-3.7-90D	RN5-3.7-90D [Ⓢ]	#6	.146 3.7									1000
	RNBL5-3.7-90D [*]	RNL5-3.7-90D ^{*Ⓢ}	#6	.146 3.7	.374 9.5	.303 7.7	.421 10.7						1000
	RNBS5-4-90D	RNS5-4-90D [Ⓢ]	#8	.169 4.3	.283 7.2	.291 7.4	.366 9.3						1000
	RNBL5-4-90D	RNL5-4-90D [Ⓢ]	#8	.169 4.3	.374 9.5	.331 8.4	.453 11.5						1000
	RNB5-5-90D	RN5-5-90D [Ⓢ]	#10	.209 5.3		.295 7.5	.413 10.5						1000
	RNBL5-5-90D [*]	RNL5-5-90D ^{*Ⓢ}	#10	.209 5.3	.488 12.4	.496 12.6	.669 17.0						1000
	RNB5-6-90D	RN5-6-90D [Ⓢ]	1/4	.252 6.4		.413 10.5	.583 14.8						1000
	RNB5-6-90D [*]	RNM5-6-90D ^{*Ⓢ}	1/4	.252 6.4	.472 12.0	.504 12.8	.673 17.1						1000
	RNB5-7-90D [*]	RN5-7-90D ^{*Ⓢ}	1/4	.291 7.4		.366 9.3	.535 13.6						1000
4-6 mm ²	RNB5-8-90D	RN5-8-90D [Ⓢ]	5/16	.331 8.4	.591 15.0	.512 13.0	.756 19.2	.236 6.0	.220 5.6	.134 3.4	.039 1.0	IZUMI MODEL 5N18 WITH DIE INDEX NO.:5.5 OR K.S. MODEL KST2000D-1322 WITH DIE INDEX NO.:12-10	1000
	RNB5-10-90D [*]	RN5-10-90D ^{*Ⓢ}	3/8	.413 10.5		.484 12.3	.713 18.1						1000
	RNB5-11-90D [*]	RN5-11-90D ^{*Ⓢ}	7/16	.453 11.5			.929 23.6						1000
	RNB5-12-90D [*]	RN5-12-90D ^{*Ⓢ}	1/2	.512 13.0	.756 19.2	.618 15.7							1000
	RNB5-14-90D [*]	RN5-14-90D ^{*Ⓢ}	9/16	.591 15.0	1.260 32.0								1000
	RNB5-16-90D [*]	RN5-16-90D ^{*Ⓢ}	5/8	.669 17.0		.937 23.8	1.500 38.1						1000
	RNB5-18-90D ^{*Ⓢ}	RN5-18-90D ^{*Ⓢ}	11/16	.748 19.0	1.260 32.0								1000
	RNB5-20-90D ^{*Ⓢ}	RN5-20-90D ^{*Ⓢ}	3/4	.827 21.0									1000

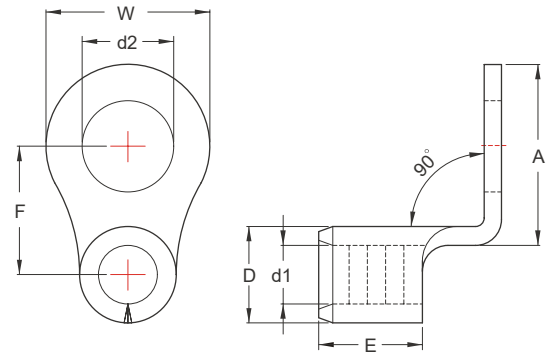


ALL LISTED

Ⓢ : NOT UL AND C-UL LISTED

* : DEVELOPING ON DEMAND

**NON-INSULATED
RING TERMINALS
(RNB-90D SERIES)**



MAXIMUM ELECTRIC CURRENT:

A.W.G.	8
AMP.	70

TERMINAL MATERIAL: COPPER

WIRE RANGE A.W.G. mm ²	ITEM NO.		STUD SIZE		DIMENSION ^{inch} / _{mm}						CRIMPING TOOL	Q'TY BOX	
	BRAZED SEAM	BUTTED SEAM	d2		W	F	A	E	D	d1			T
8 A.W.G. 8 mm ²	RNB8-3.7-90D		#6	.146 3.7	.315 8.0	.425	.496	.335 8.5	.283 7.2	.177 4.5	.047 1.2	IZUMI MODEL 5N18 WITH DIE INDEX NO.:8 OR K.S. MODEL KST2000D-1322 WITH DIE INDEX NO.:8	500
	RNBS8-4-90D		#8	.169 4.3		.370	.433						500
	RNBL8-4-90D*		#8	.169 4.3	.472	.378	.528						500
	RNBS8-5-90D		#10	.209 5.3	.346	.441	.520						500
	RNBM8-5-90D		#10	.209 5.3	.472	.409	.559						500
	RNBL8-5-90D*		#10	.209 5.3	.591	.244	.323						500
	RNBS8-6-90D		1/4	.252 6.4	.472	.272	.394						500
	RNBL8-6-90D		1/4	.252 6.4	.531	.724	500						
	RNB8-8-90D		5/16	.331 8.4	.591	.559	.744						500
	RNB8-10-90D		3/8	.413 10.5	.642	.839	500						
	RNB8-11-90D* [Ⓢ]		7/16	.453 11.5	.634	.941	500						
	RNB8-12-90D		1/2	.512 13.0	.661	.965	500						
	RNB8-14-90D* [Ⓢ]		9/16	.591 15.0	.787	20.0	500						
	RNB8-16-90D* [Ⓢ]		5/8	.669 17.0	1.244	.957	1.492						500
	RNB8-18-90D* [Ⓢ]		11/16	.748 19.0	31.6	24.3	37.9						500
	RNB8-20-90D* [Ⓢ]		3/4	.827 21.0	.906	23.0	500						
RNB8-22-90D* [Ⓢ]		7/8	.906 23.0			500							

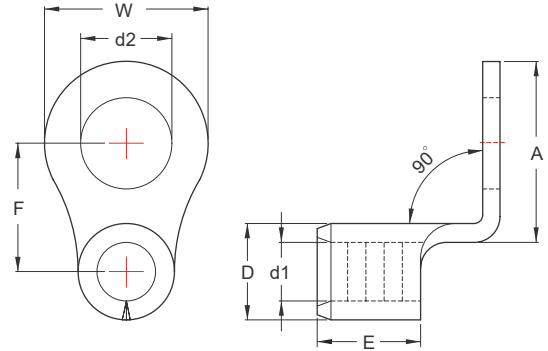


ALL LISTED

Ⓢ : NOT UL AND C-UL LISTED

* : DEVELOPING ON DEMAND

**NON-INSULATED
RING TERMINALS
(RNB-90D SERIES)**



MAXIMUM ELECTRIC CURRENT:

A.W.G.	6	4	2	1/0	2/0	3/0	4/0	250	300	350	400	500	600
AMP.	95	125	170	230	265	310	360	405	445	505	545	620	690

TERMINAL MATERIAL: COPPER

WIRE RANGE A.W.G. mm ²	ITEM NO.		STUD SIZE	DIMENSION <small>inch mm</small>							CRIMPING TOOL	Q'TY BOX	
	BRAZED SEAM	BUTTED SEAM		d2	W	F	A	E	D	d1			T
6 A.W.G. 14 mm ²	RNB14-4-90D		#8	.169 4.3	.472 12.0	.602 15.3	.701 17.8	.413 10.5	.354 9.0	.228 5.8	.059 1.5	IZUMI MODEL 9H-60 (EP-38) WITH DIE INDEX NO.:14	500
	RNBS14-5-90D		#10	.209 5.3	.374 9.5	.638 16.2	.697 17.7						500
	RNB14-5-90D		#10	.209 5.3	.472 12.0	.602 15.3	.701 17.8						500
	RNBS14-6-90D		1/4	.252 6.4	.472 12.0		.756 19.2						500
	RNBL14-6-90D*		1/4	.252 6.4		.661 16.8	.862 21.9						500
	RNB14-8-90D		5/16	.331 8.4	.630 16.0								500
	RNB14-10-90D		3/8	.431 10.5		.685 17.4	.874 22.2						500
	RNB14-11-90D*		7/16	.453 11.5	.866 22.0	.787 20.0	1.091 27.7						250
	RNB14-12-90D*		1/2	.512 13.0		.850 21.6	1.157 29.4						250
	RNB14-14-90D*		9/16	.591 15.0									250
	RNB14-16-90D*		5/8	.669 17.0	1.244 31.6	.831 21.1	1.315 33.4						250
	RNB14-18-90D*		11/16	.748 19.0									250
RNB14-20-90D*		3/4	.827 21.0				250						
4 A.W.G. 22 mm ²	RNBS22-5-90D		#10	.209 5.3	.480 12.2	.669 17.0	.748 19.0	.472 12.0	.453 11.5	.303 7.7	.067 1.7	IZUMI MODEL 9H-60 (EP-38) WITH DIE INDEX NO.:22	250
	RNBS22-6-90D		1/4	.252 6.4		.783 19.9	.854 21.7						250
	RNBL22-6-90D		1/4	.252 6.4	.650 16.5	.661 16.8	.807 20.5						250
	RNB22-8-90D		5/16	.331 8.4	.630 16.0	.795 20.2	250						
2 A.W.G. 38 mm ²	RNBS38-6-90D		1/4	.252 6.4	.602 15.3	.776 19.7	.886 22.5	.551 14.0	.524 13.3	.370 9.4	.071 1.8	IZUMI MODEL 9H-60 (EP-38) WITH DIE INDEX NO.:38	200
	RNBS38-8-90D		5/16	.331 8.4									200
1/0 A.W.G. 60 mm ²	RNB60-8-90D	⊙	5/16	.331 8.4	.866 22.0	.941 23.9	1.161 29.5	.709 18.0	.606 15.4	.449 11.4	.071 1.8		100
3/0 A.W.G. 80 mm ²	RNB80-8-90D	⊙	5/16	.331 8.4	1.063 27.0	.996 25.3	1.228 31.2	.787 20.0	.768 19.5	.571 14.5	.091 2.3		50
4/0 A.W.G. 100 mm ²	RNB100-8-90D	⊙	5/16	.331 8.4	1.122 28.5	.890 22.6	1.114 28.3	.827 21.0	.870 22.1	.646 16.4	.106 2.7		50
500/600 A.W.G. 325 mm ²	RNB325-27-90D	⊙	1	1.102 28.0	1.988 50.5	1.969 50.0	2.402 61.0	1.398 35.5	1.480 37.6	1.102 28.0	.169 4.3		5



ALL LISTED

⊙ : NOT UL AND C-UL LISTED

* : DEVELOPING ON DEMAND