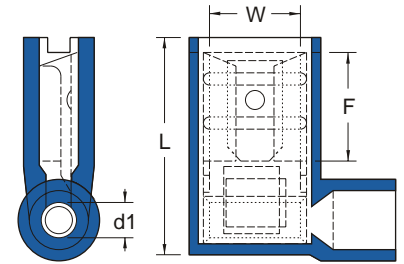


NYLON-INSULATED FLAG FEMALE DISCONNECTORS (NORMAL TYPE)



MAXIMUM ELECTRIC CURRENT:

A.W.G.	22	20	18	16	14	12	10
AMP.	3	4	7	10	15	20	24

MAXIMUM ELECTRICAL RATING: 105°C 300 VOLTS MAX.

INSULATION MATERIAL: NYLON

INSULATION COLOR:

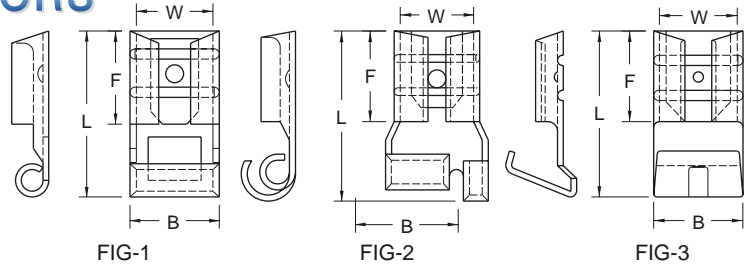
22-18 A.W.G.: RED ■ 16-14 A.W.G.: BLUE ■ 12-10 A.W.G.: YELLOW ■

TERMINAL MATERIAL: BRASS

WIRE RANGE A.W.G. mm ²	ITEM NO.	NEMA TAB	DIMENSION ^{inch} / _{mm}					CRIMPING TOOL	Q'TY BOX
			W	F	L	d1	T		
22-18 A.W.G. 0.5-0.75 mm ²	FLDNY1-250	.032 × .250 (0.8 × 6.35)	.260 6.6	.335 8.5	.630 16.0	.067 1.7	.018 0.45	K.S. MODEL KST2000F WITH DIE INDEX COLOR:RED	1000
16-14 A.W.G. 1.5-2.5 mm ²	FLDNY2-250	.032 × .250 (0.8 × 6.35)	.260 6.6	.335 8.5	.630 16.0	.091 2.3	.018 0.45	K.S. MODEL KST2000F WITH DIE INDEX COLOR:BLUE	1000
12-10 A.W.G. 4-6 mm ²	FLDNY5-250	.032 × .250 (0.8 × 6.35)	.260 6.6	.299 7.6	.650 16.5	.134 3.4	.018 0.45	K.S. MODEL KST2000FM WITH DIE INDEX COLOR:YELLOW	500

UL cUL ALL LISTED

NON-INSULATED FLAG FEMALE DISCONNECTORS (NORMAL TYPE)



MAXIMUM ELECTRIC CURRENT:

A.W.G.	22	20	18	16	14	12	10
AMP.	3	4	7	10	15	20	24

TERMINAL MATERIAL: BRASS

WIRE RANGE A.W.G. mm ²	ITEM NO.	NEMA TAB	DIMENSION ^{inch} / _{mm}					FIG	CRIMPING TOOL	Q'TY BOX
			W	F	L	B	T			
22-18 A.W.G. 0.5-0.75 mm ²	FLDNB1-187(5)	.020 × .187 (0.5 × 4.75)	.197 5.0	.244 6.2	.445 11.3	.217 5.5	.016 0.4	1		1000
	FLDNB1-187(8)	.032 × .187 (0.8 × 4.75)								1000
	FLDNB1-250	.032 × .250 (0.8 × 6.35)	.260 6.6	.299 7.6	.551 14.0	.291 7.4	.018 0.45	1		1000
	FLDNG1-250	.032 × .250 (0.8 × 6.35)		.307 7.8	.591 15.0	.366 9.3		2		1000
16-14 A.W.G. 1.5-2.5 mm ²	FLDNB2-187(5)	.020 × .187 (0.5 × 4.75)	.197 5.0	.244 6.2	.457 11.6	.217 5.5	.016 0.4	1		1000
	FLDNB2-187(8)	.032 × .187 (0.8 × 4.75)								1000
	FLDNB2-250	.032 × .250 (0.8 × 6.35)	.260 6.6	.299 7.6	.551 14.0	.291 7.4	.018 0.45	1		1000
	FLDNG2-250	.032 × .250 (0.8 × 6.35)		.307 7.8	.591 15.0	.366 9.3		2		1000
12-10 A.W.G. 4-6 mm ²	FLDNB5-250	.032 × .250 (0.8 × 6.35)	.260 6.6	.299 7.6	.571 14.5	.295 7.5	.018 0.45	3		500