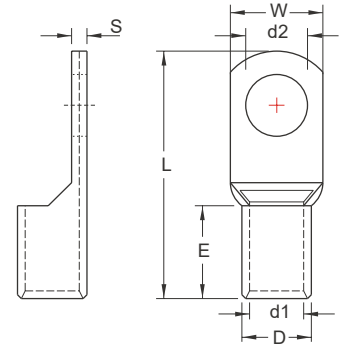


NON-INSULATED COPPER TUBULAR LUGS (TL SERIES)



MAXIMUM ELECTRIC CURRENT:

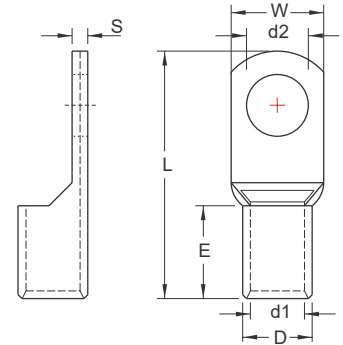
A.W.G.	16	14	12	10	8	6	4	2
AMP.	18	30	35	50	70	95	125	170

TERMINAL MATERIAL: COPPER

WIRE RANGE A.W.G. mm ²	ITEM NO.	STUD SIZE		DIMENSION mm					CRIMPING TOOL	Q'TY BOX						
		d2	W	d1	D	L	E	S								
16 A.W.G. 1.5 mm ²	TL1.5-5	⊙ #10	5.3	8.0	1.8	3.3	16.0			K.S. MODEL KST 2000D-1516 WITH DIE INDEX NO:0.3-2.5	1000					
14 A.W.G. 2.5 mm ²	TL2.5-4	#8	4.3	8.0	2.4	4.0	19.6	8.0		K.S. MODEL KST 2000D-1516 WITH DIE INDEX NO:0.3-2.5	1000					
	TL2.5-5	#10	5.3													1000
	TL2.5-6	1/4	6.5	10.0			21.0				1000					
12 A.W.G. 4.0 mm ²	TL4-4	⊙ #8	4.3	10.0	3.1	4.8	21.0			K.S. MODEL KST 2000D-1516 WITH DIE INDEX NO:4-6	1000					
	TL4-5	⊙ #10	5.3													1000
	TL4-6	⊙ 1/4	6.5													1000
12-10 A.W.G. 4-6 mm ²	TL6-4	⊙ #8	4.3	10.0	3.8	5.5	25.5			K.S. MODEL KST 2000D-1516 WITH DIE INDEX NO:4-6	500					
	TL6-5	⊙ #10	5.3													500
	TL6-6	⊙ 1/4	6.5													500
8 A.W.G. 10 mm ²	TL10-5	#10	5.3	12.6	4.5	6.2	27.0	10.0	1.1	K.S. MODEL KST 2000D-1516 WITH DIE INDEX NO:10	500					
	TL10-6	⊙ 1/4	6.5													500
	TL10-8	⊙ 5/16	8.4													500
6 A.W.G. 16 mm ²	TL16-5	⊙ #10	5.3	12.6	5.5	7.2	29.5	10.5	1.3	K.S. MODEL KST 2000D-1516 WITH DIE INDEX NO:16	250					
	TL16-6	⊙ 1/4	6.5													250
	TL16-8	⊙ 5/16	8.4													250
4 A.W.G. 25 mm ²	TL25-6	1/4	6.5	15.0	7.0	9.0	33.0	12.0	1.65	K.S. MODEL KSTHX-150B WITH DIE INDEX NO:25	200					
	TL25-8	5/16	8.4													200
	TL25-10	3/8	10.5													200
2 A.W.G. 35 mm ²	TL35-6	1/4	6.5	15.2	8.2	10.6	38.0	14.2	2.5	K.S. MODEL KSTHX-150B WITH DIE INDEX NO:35 OR NOVOPRESS MODEL HPM400	200					
	TL35-8	5/16	8.4													200
	TL35-10	3/8	10.5													100

Ⓢ Ⓢ ALL LISTED ⊙ : NOT UL AND C-UL LISTED

**NON-INSULATED
COPPER TUBULAR LUGS (TL SERIES)**



MAXIMUM ELECTRIC CURRENT:

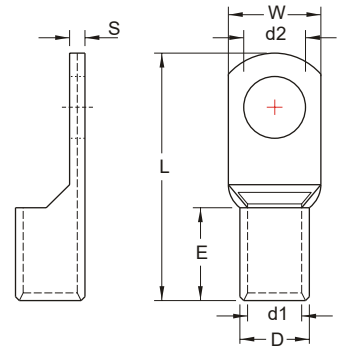
A.W.G.	1/0	2/0	3/0	4/0	250	300	350	400
AMP.	230	265	310	360	405	445	505	545

TERMINAL MATERIAL: COPPER

WIRE RANGE A.W.G. mm ²	ITEM NO.	STUD SIZE		DIMENSION mm						CRIMPING TOOL	Q'TY BOX
		d2		W	d1	D	L	E	S		
1/0A.W.G. 50 mm ²	TL50-6	1/4	6.4	18.5	10.0	13.0	44.5	18.0	2.9	K.S. MODEL KSTHX-150B WITH DIE INDEX NO:50 OR NOVOPRESS MODEL HPM400	100
	TL50-8	5/16	8.4								100
	TL50-10	3/8	10.5								100
	TL50-12	1/2	13.0								100
2/0 MCM 70 mm ²	TL70-8	5/16	8.4	21.4	11.5	15.0	54.2	20.4	3.5	K.S. MODEL KSTHX-150B WITH DIE INDEX NO:70 OR NOVOPRESS MODEL HPM400	100
	TL70-10	3/8	10.5								100
	TL70-12	1/2	13.0								100
3/0 MCM 95 mm ²	TL95-10	3/8	10.5	25.5	13.5	17.4	59.0	23.4	3.9	K.S. MODEL KSTHX-150B WITH DIE INDEX NO:95 OR NOVOPRESS MODEL HPM400	50
	TL95-12	1/2	13.0								50
4/0 MCM 120 mm ²	TL120-10	3/8	10.5	28.3	15.5	19.9	66.7	24.6	4.5	K.S. MODEL KSTHX-150B WITH DIE INDEX NO:120 OR NOVOPRESS MODEL HPM400	25
	TL120-12	1/2	13.0								25
	TL120-14	9/16	15.0								25
	TL120-16	5/8	17.0								25
250/300 MCM 150 mm ²	TL150-12	1/2	13.0	31.0	17.0	21.7	74.5	29.5	4.7	K.S. MODEL KSTHX-150B WITH DIE INDEX NO:150 OR NOVOPRESS MODEL HPM400	25
	TL150-14	9/16	15.0								25
	TL150-16	5/8	17.0								25
300/350 MCM 185 mm ²	TL185-12	1/2	13.0	34.2	19.0	24.0	81.4	32.5	5.0	K.S. MODEL KSTP-240 WITH DIE INDEX NO:185 OR NOVOPRESS MODEL HPM400	10
	TL185-14	9/16	15.0								10
	TL185-16	5/8	17.0								10
400 MCM 240 mm ²	TL240-12	1/2	13.0	39.0	21.5	27.0	94.0	35.5	5.5	K.S. MODEL KSTP-240 WITH DIE INDEX NO:240 OR NOVOPRESS MODEL HPM400	10
	TL240-14	9/16	15.0								10
	TL240-16	5/8	17.0								10
	TL240-18	11/16	19.0								10

UL cUL ALL LISTED

**NON-INSULATED
COPPER TUBULAR LUGS (TL SERIES)**



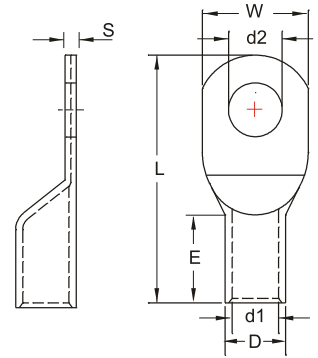
MAXIMUM ELECTRIC CURRENT:

A.W.G.	500	600	700	750	800	900	1000	1250
AMP.	620	690	755	785	815	870	935	1065

TERMINAL MATERIAL: COPPER

WIRE RANGE A.W.G. mm ²	ITEM NO.	STUD SIZE		DIMENSION mm						CRIMPING TOOL	Q'TY BOX
		d2		W	d1	D	L	E	S		
500 MCM 300 mm ²	TL300-14	9/16	15.0	44.0	24.5	31.0	103.2	42.0	6.5	NOVOPRESS MODEL HPM400	5
	TL300-16	5/8	17.0								5
	TL300-18	11/16	19.0								5
	TL300-20	3/4	21.0								5
	TL300-22	7/8	23.0								5
	TL300-24	15/16	25.0								5
600/750 MCM 400 mm ²	TL400-14	9/16	15.0	51.0	27.5	35.5	120.2	47.0	8.0	NOVOPRESS MODEL HPM400	5
	TL400-16	5/8	17.0								5
	TL400-18	11/16	19.0								5
	TL400-20	3/4	21.0								5
	TL400-22	7/8	23.0								5
	TL400-24	15/16	25.0								5
800/1000 MCM 500 mm ²	TL500-12	1/2	13.0	56.0	31.0	40.0	127.0	47.5	9.0		5
	TL500-14	⊙ 9/16	15.0								5
	TL500-16	⊙ 5/8	17.0								5
	TL500-18	⊙ 11/16	19.0								5
	TL500-20	⊙ 3/4	21.0								5
	TL500-22	⊙ 7/8	23.0								5
	TL500-24	⊙ 15/16	25.0								5
1000/1250 MCM 630 mm ²	TL630-14	⊙ 9/16	15.0	63.0	34.5	44.5	140.0	56.0	10.0		2
	TL630-16	⊙ 5/8	17.0								2
	TL630-18	⊙ 11/16	19.0								2
	TL630-20	⊙ 3/4	21.0								2
	TL630-22	⊙ 7/8	23.0								2
	TL630-24	⊙ 11/16	25.0								2

**NON-INSULATED
COPPER TUBULAR LUGS (TLS SERIES)**



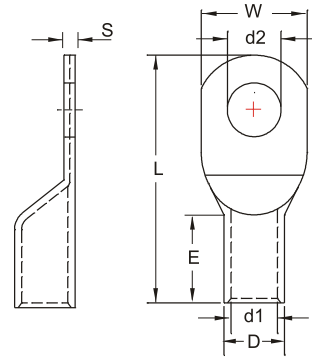
MAXIMUM ELECTRIC CURRENT:

A.W.G.	14	12	10	8	6	4	2	1/0
AMP.	30	35	50	70	95	125	170	230

TERMINAL MATERIAL: COPPER

WIRE RANGE A.W.G. mm ²	ITEM NO.	STUD SIZE		DIMENSION mm						CRIMPING TOOL	Q'TY BOX
		d2	W	d1	D	L	E	S			
14 A.W.G. 2.5 mm ²	TLS2.5-4	#8	4.3	8.0	2.4	4.0	19.6	8.0	0.95	K.S. MODEL KST 2000D-1516 WITH DIE INDEX NO:0.3-2.5	1000
	TLS2.5-5	#10	5.3						0.95		1000
	TLS2.5-6	1/4	6.5	10.0	21.0	0.8	1000				
12 A.W.G. 4.0 mm ²	TLS4-4	#8	4.3	10.0	3.1	4.8	21.0	9.0	1.7	K.S. MODEL KST 2000D-1516 WITH DIE INDEX NO:4-6	1000
	TLS4-5	#10	5.3								1000
	TLS4-6	1/4	6.5								1000
12-10 A.W.G. 4-6 mm ²	TLS6-4	#8	4.3	10.0	3.8	5.5	25.5	10.0	1.2	K.S. MODEL KST 2000D-1516 WITH DIE INDEX NO:4-6	500
	TLS6-5	#10	5.3								500
	TLS6-6	1/4	6.5								500
8 A.W.G. 10 mm ²	TLS10-6	1/4	6.5	12.6	4.5	6.2	27.0	10.0	1.1	K.S. MODEL KST 2000D-1516 WITH DIE INDEX NO:10	500
	TLS10-8	5/16	8.4								500
6 A.W.G. 16 mm ²	TLS16-6	1/4	6.5	12.6	5.5	7.2	29.5	10.5	1.3	K.S. MODEL KST 2000D-1516 WITH DIE INDEX NO:16	250
	TLS16-8	5/16	8.4								250
4 A.W.G. 25 mm ²	TLS25-6	1/4	6.5	15.0	7.0	9.0	33.0	12.0	1.65	K.S. MODEL KSTHX-150B WITH DIE INDEX NO:25	200
	TLS25-8	5/16	8.4								200
	TLS25-10	3/8	10.5								200
2 A.W.G. 35 mm ²	TLS35-6	1/4	6.5	15.2	8.2	10.6	38.0	14.2	2.5	K.S. MODEL KSTHX-150B WITH DIE INDEX NO:35 OR NOVOPRESS MODEL HPM400	200
	TLS35-8	5/16	8.4								200
	TLS35-10	3/8	10.5								100
1/0A.W.G. 50 mm ²	TLS50-8	5/16	8.4	18.5	10.0	13.0	44.5	18.0	2.9	K.S. MODEL KSTHX-150B WITH DIE INDEX NO:50 OR NOVOPRESS MODEL HPM400	100
	TLS50-10	3/8	10.5								100
	TLS50-12	1/2	13.0								100

**NON-INSULATED
COPPER TUBULAR LUGS (TLS SERIES)**



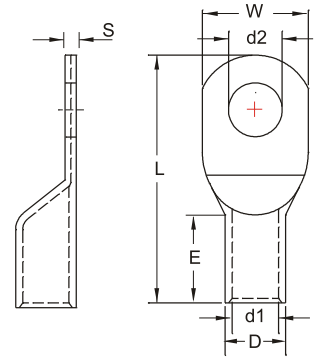
MAXIMUM ELECTRIC CURRENT:

A.W.G.	2/0	3/0	4/0	250	300	350	400
AMP.	265	310	360	405	445	505	545

TERMINAL MATERIAL: COPPER

WIRE RANGE A.W.G. mm ²	ITEM NO.	STUD SIZE		DIMENSION mm						CRIMPING TOOL	Q'TY BOX
		d2	W	d1	D	L	E	S			
2/0 MCM 70 mm ²	TLS70-8	5/16	8.4							K.S. MODEL KSTHX-150B WITH DIE INDEX NO:70 OR NOVOPRESS MODEL HPM400	100
	TLS70-10	3/8	10.5	21.4	11.5	15.0	54.2	20.4	3.5		100
	TLS70-12	1/2	13.0								
3/0 MCM 95 mm ²	TLS95-10	3/8	10.5	25.5	13.5	17.4	59.0	23.4	3.9	K.S. MODEL KSTHX-150B WITH DIE INDEX NO:95 OR NOVOPRESS MODEL HPM400	50
	TLS95-12	1/2	13.0								50
4/0 MCM 120 mm ²	TLS120-10	3/8	10.5	28.3	15.5	19.9	66.7	24.6	4.5	K.S. MODEL KSTHX-150B WITH DIE INDEX NO:120 OR NOVOPRESS MODEL HPM400	25
	TLS120-12	1/2	13.0								25
	TLS120-14	9/16	15.0								25
	TLS120-16	5/8	17.0								25
250/300 MCM 150 mm ²	TLS150-12	1/2	13.0	31.0	17.0	21.7	74.5	29.5	4.7	K.S. MODEL KSTHX-150B WITH DIE INDEX NO:150 OR NOVOPRESS MODEL HPM400	25
	TLS150-14	9/16	15.0								25
	TLS150-16	5/8	17.0								25
300/350 MCM 185 mm ²	TLS185-12	1/2	13.0	34.2	19.0	24.0	81.4	32.5	5.0	K.S. MODEL KSTP-240 WITH DIE INDEX NO:185 OR NOVOPRESS MODEL HPM400	10
	TLS185-14	9/16	15.0								10
	TLS185-16	5/8	17.0								10
400 MCM 240 mm ²	TLS240-14	9/16	15.0	39.0	21.5	27.0	94.0	35.5	5.5	K.S. MODEL KSTP-240 WITH DIE INDEX NO:240 OR NOVOPRESS MODEL HPM400	10
	TLS240-16	5/8	17.0								10
	TLS240-18	11/16	19.0								10

**NON-INSULATED
COPPER TUBULAR LUGS (TLS SERIES)**



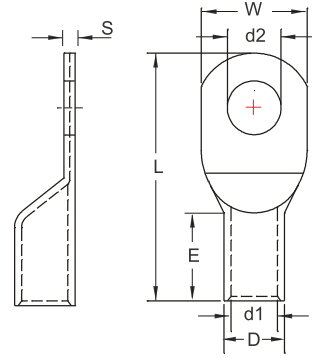
MAXIMUM ELECTRIC CURRENT:

A.W.G.	500	600	700	750	800	900	1000
AMP.	620	690	755	785	815	870	935

TERMINAL MATERIAL: COPPER

WIRE RANGE A.W.G. mm ²	ITEM NO.	STUD SIZE		DIMENSION mm						CRIMPING TOOL	Q'TY BOX
		d2		W	d1	D	L	E	S		
500 MCM 300 mm ²	TLS300-14	9/16	15.0	44.0	24.5	31.0	103.2	42.0	6.5	NOVOPRESS MODEL HPM400	5
	TLS300-16	5/8	17.0								5
	TLS300-18	11/16	19.0								5
	TLS300-20	3/4	21.0								5
	TLS300-22	7/8	23.0								5
	TLS300-24	15/16	25.0								5
600/750 MCM 400 mm ²	TLS400-14	9/16	15.0	51.0	27.5	35.5	120.2	47.0	8.0	NOVOPRESS MODEL HPM400	5
	TLS400-16	5/8	17.0								5
	TLS400-18	11/16	19.0								5
	TLS400-20	3/4	21.0								5
	TLS400-22	7/8	23.0								5
	TLS400-24	15/16	25.0								5
800/1000 MCM 500 mm ²	TLS500-14	9/16	15.0	56.0	31.0	40.0	127.0	47.5	9.0		
	TLS500-16	5/8	17.0								5
	TLS500-18	11/16	19.0								5
	TLS500-20	3/4	21.0								5
	TLS500-22	7/8	23.0								5
	TLS500-24	15/16	25.0								5

**NON-INSULATED
COPPER TUBULAR LUGS (TLS SERIES)**



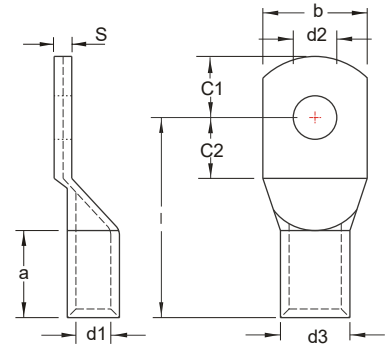
MAXIMUM ELECTRIC CURRENT:

A.W.G.	1000	1250
AMP.	935	1065

TERMINAL MATERIAL: COPPER

WIRE RANGE A.W.G. mm ²	ITEM NO.	STUD SIZE		DIMENSION mm						CRIMPING TOOL	Q'TY BOX
		d2		W	d1	D	L	E	S		
1000/1250 MCM 630 mm ²	TLS630-14	9/16	15.0	63.0	34.5	44.5	140.0	56.0	10.0		2
	TLS630-16	5/8	17.0								2
	TLS630-18	11/16	19.0								2
	TLS630-20	3/4	21.0								2
	TLS630-22	7/8	23.0								2
	TLS630-24	11/16	25.0								2

**NON-INSULATED
COPPER TUBULAR LUGS (TLK SERIES)**



MAXIMUM ELECTRIC CURRENT:

A.W.G.	18	16	14	12	10
AMP.	17	18	30	35	50

TERMINAL MATERIAL: COPPER TUBULAR

WIRE RANGE A.W.G. mm ²	ITEM NO.	DIMENSION mm									CRIMPING TOOL	Q'TY BOX		
		a	b	C1	C2	d1	d2	d3	l	S				
18 A.W.G. 0.75 mm ²	TLK0.75-3	6.0	6.0	3.2	4.0	1.3	3.2	2.8	12.0	0.7	K.S. MODEL KST2000D-1516 WITH DIE INDEX NO:0.3-2.5	1000		
	TLK0.75-4		6.5	4.0	5.0		4.3		13.0			1000		
	TLK0.75-5		7.5	7.5	5.5		5.3		14.0			1000		
16 A.W.G. 1.5 mm ²	TLK1.5-3	6.0	6.5	3.2	4.0	1.8	3.2	3.3	12.0	0.8	K.S. MODEL KST2000D-1516 WITH DIE INDEX NO:0.3-2.5	1000		
	TLK1.5-4			4.0	5.0		4.3		13.0			1000		
	TLK1.5-5		7.5	4.7	5.5		5.3		14.0			1000		
	TLK1.5-6		9.0	6.5	6.5		6.4		16.0			1000		
14 A.W.G. 2.5 mm ²	TLK2.5-3	6.0	7.5	3.2	4.0	2.3	3.2	4.2	12.0	1.25	K.S. MODEL KST2000D-1516 WITH DIE INDEX NO:0.3-2.5	1000		
	TLK2.5-4			4.0	5.0		4.3		13.0			1000		
	TLK2.5-5		8.5	4.7	5.5		5.3		14.0			1000		
	TLK2.5-6		9.5	6.5	6.5		6.4		16.0			1000		
	TLK2.5-8		13.0	7.7	9.5		8.4		20.0			1000		
12 A.W.G. 4.0 mm ²	TLK4-4	8.0	8.5	5.5	3.0	3.0	4.3	5.0	17.0		K.S. MODEL KST2000D-1516 WITH DIE INDEX NO:0.3-2.5	1000		
	TLK4-5			4.7			6.0					5.3	19.0	1000
	TLK4-6		9.0	6.5			6.5					6.4	22.0	1000
	TLK4-8		10.0	8.5			9.5					8.4		1000
12-10 A.W.G. 6.0 mm ²	TLK6-4	9.0	10.0	5.0	3.5	3.5	4.3	6.5	20.0	2.4	K.S. MODEL LY-2045D WITH DIE INDEX NO:5.5	500		
	TLK6-5			7.5			5.5		21.0			500		
	TLK6-6		6.5	6.5			23.0		1.9	500				
	TLK6-8		10.0	10.0			25.0		1.5	500				
	TLK6-10		12.0	12.0			28.0		1.3	500				
	TLK6-12		15.0	15.0					1.2	500				

UL cUL ALL LISTED