

STEEL FRAME HACKSAW



- Positive locking mechanism
- Two blade position 90°/55°
- Aluminium handle - 12" blades

SKU#	Length		Blade Size		Box/CTN
	mm	inches	mm	inches	
15-166	450	17-3/4"	305	12"	6/36

10" V 12" ADJUSTABLE BLADE RUBBER GRIP HACKSAW



- Easy adjustment of frame for 10" and 12" blades
- Rigid steel frame with molded cushion grip
- D-shape guard helps protect hands and knuckles
- Blade Length 10" / 254mm or 12"/305mm
- Throat Depth 3-7/8" / 98mm

SKU#	Length		Blade Size		Box/CTN
	mm	inches	mm	inches	
15-265-5	98	3-7/8"	305	12"	6/6

10" V 12" ADJUSTABLE BLADE HACKSAW



- Rugged plated steel frame
- Fits 10" and 12" blades
- Comfort pistol-grip handle
- Blade Length 10"/254mm or 12"/305mm
- Throat Depth 2-3/4" / 70mm

SKU#	Length		Blade Size		Box/CTN
	mm	inches	mm	inches	
15-565-5	70	2-3/4"	254/300	10"/12"	6/6

WOOD HANDLE SAW



- Machine set and sharpened teeth for accurate cutting
- High carbon steel blade hardened and tempered for sharpness and durability
- Comes with full length sleeve

SKU#	Contents	Tooth Pattern	Box/CTN
20-502	18"	Crosscut / 7TPI	12/24
20-503	20"	Crosscut / 7TPI	12/48

PLASTIC HANDLE SAW



- Handle offers a square/mitre feature with 45° and 90° angles
- Contoured sturdy handle designed for comfort and control
- Full length protective sleeve

SKU #	Blade Length	Tooth Pattern	Box/CTN
20-081	20"	Crosscut / 6TPI	12/48

LUCTADOR HANDSAW



- Handle offers a square/mitre feature with 45 degree and 90 degree angles
- Contoured sturdy handle designed for comfort and control
- Full length protective sleeve
- Cross cut

SKU #	Description	Blade Length (in.)	Blade Length (mm)	TPI
20-082-23	Saw Crosscut 22" X 6T/7P	22"	558	6
20-083-23	Saw Crosscut 24" X 6T/7P	24"	600	6
20-004-23	Saw Crosscut 18" X 7T/8P	18"	450	7
20-005-23	Saw Crosscut 20" X 7T/8P	20"	500	7
20-006-23	Saw Crosscut 22" X 7T/8P	22"	558	7
20-007-23	Saw Crosscut 24" X 7T/8P	24"	600	7

FATMAX® JAB SAW



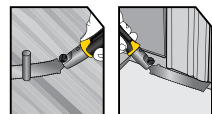
- SharpTooth™ Technology cuts on push and pull strokes and is up to 50% faster than traditional tooth designs
- Sharpened tip punches through drywall with ease
- Hardened, tempered blade for increased cutting life
- Excellent for wood, plastic, and drywall
- Slip-resistant handle is designed for strength and durability

SKU #	Description	Blade Length (in.)	Blade Length (mm)	TPI	Box Qty
20-556	6" FatMax® Jab saw	6"	152	9	6

FATMAX® MINI FLUSH CUT PULL SAW



- Flexible blade for flush cutting plugs and dowels
- 23-point tooth geometry cuts quickly and cleanly on the pull stroke
- Designed for trimming through tenon or lap joints
- Double sided blade for convenient cutting from the left or the right
- Ergonomically designed cushion grip handle for comfort

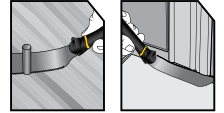


SKU #	Description	Blade Length (in.)	Blade Length (mm)	TPI	Box Qty
20-331	FatMax® Mini Flush Cut Pull Saw	4-3/4"	120	23	4

FLUSH CUT PULL SAW



- Flexible blade for flush and finish cuts
- Quick-change blade to handle assembly
- Thin blade for cutting accuracy and clean finish
- Ergonomically designed cushion grip handle for comfort



SKU #	Description	Blade Length (in.)	Blade Length (mm)	TPI	Box Qty
20-500	Flush Cut Pull Saw	9"	229	15	4

12" BASIC HACKSAW



- Robust, all-metal frame for durability
- Full grip handle helps protect knuckles
- Compact frame for comfort and control
- Large tensioning knob for ease of use
- 90° and 180° adjustable blade angles allowing flush cuts

SKU #	Description	Blade Length (in.)	Blade Length (mm)	TPI	Box Qty
STHT20138	12" Basic Hacksaw	12"	305	24	6

MINI-HACK™ UTILITY SAW



- 15809 - Durable solid aluminum construction
- 20807 – Durable solid plastic construction
- Ideal for hard-to-reach places
- Handle covers blade to help protect user's hands

SKU #	Description	Blade Length (in.)	Blade Length (mm)	TPI	Box Qty
STHT15809-8	10" Metal Mini-Hack™ Utility Saw	10"	250	24	6
STHT20807-8	10" Mini-Hack™ Utility Saw	10"	250	24	6

COPING SAW



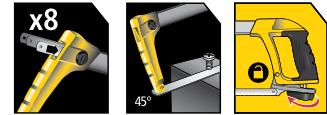
- Hardened, tempered provides clean, controlled cutting action
- 4 blades included
- Light weight wooden handle

SKU #	Description	Blade Length (in.)	Blade Length (mm)	Frame Depth (mm)	TPI	Box Qty
STHT15104-8	Coping Saw 120mm_4.75" Depth (4 blades)	6-1/2"	165	120	15	-
STHT15106-8	Coping Saw 170mm_6.75" Depth (4 blades)	6-1/2"	165	120	15	-

12" TUBULAR HIGH-TENSION HACKSAW



- High tension hacksaw frame
- Holds blades at up to 300 Lbs (136Kg)
- Rubber handles and large comfortable tensioning knob
- Allows positioning of the blade at 45° for more versatility
- 120mm (4-3/4") throat depth
- Storage of hacksaw blade (8 PCS) in the frame
- Durable and robust tubular metal frame
- Long reach cutting

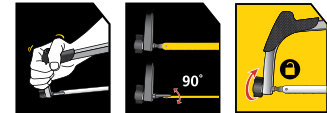


SKU #	Description	Blade Length (in.)	Blade Length (mm)	TPI
STHT20140-8	12" Tubular High-Tension Hacksaw	12"	300	24

12" PRO FIXED HACKSAW



- Ergonomic handle with pattern for comfort, better grip and control
- Closed handle for hand protection
- Allows positions of the blade at 90° for more versatility
- Front thumb grip with patented texture for improved control and grip
- Tension screw with pattern for easy blade tensioning
- Resistant light weight and lean frame design allows access to difficult hard-to-reach areas



SKU #	Description	Blade Length (in.)	Blade Length (mm)	TPI	Box Qty
STHT20064-8	12" Pro Fixed Hacksaw	12"	300	24	6

12" FIXED HACKSAW



- Comfortable full handle with patented pattern for better grip and control
- Full grip protects knuckles
- Sturdy all steel painted frame
- 101.6mm (4") throat depth

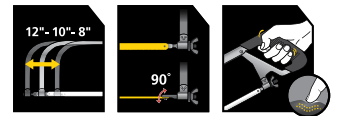


SKU #	Description	Blade Length (in.)	Blade Length (mm)	TPI
STHT20206-8	12" Fixed hacksaw	12"	300	24

PRO ADJUSTABLE HACKSAW



- Adjustable to 8", 10" and 12" blades
- Closed handle for strength and control
- Rubber covered handle for greater control and better grip
- Allows positioning of the blade at 90° for more versatility
- 101.6mm (4") throat depth

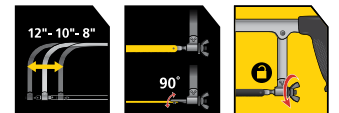


SKU #	Description	Blade Length (in.)	Blade Length (mm)	TPI
STHT15555-8	Pro Adjustable Hacksaw	12"	300	24

ADJUSTABLE HACKSAW



- Adjustable to 8", 10" and 12" blades
- Comfort pistol-grip handle with patented pattern for better grip and control
- Allows positioning of the blade at 90° for more versatility
- 101.6mm (4") throat depth



SKU #	Description	Blade Length (in.)	Blade Length (mm)	TPI
STHT15200-8	Adjustable Hacksaw	12"	300	24

BI-METAL HACKSAW BLADE



- Combines the flexibility of carbon steel backs with the cutting performance of a high-speed steel cutting edge
- Cuts most metals including unhardened tool steel and stainless-steel

SKU #	Description	TPI	Length (in.)	Length (mm)	No. of Blade
STHT20297-8	Bi-Metal Hacksaw Blade 18Tx12"(x100)	18	12"	300	100
STHT20298-8	Bi-Metal Hacksaw Blade 24Tx12"(x100)	24	12"	300	100
STHT20299-8	Bi-Metal Hacksaw Blade 32Tx12"(x100)	32	12"	300	10

BI-METAL HACKSAW BLADE



- Combines the flexibility of carbon steel backs with the cutting performance of a high-speed steel cutting edge
- Cuts most metals including unhardened tool steel and stainless-steel

SKU #	Description	TPI	Length (in.)	Length (mm)	No. of Blade
20-175	Bi-Metal Hacksaw Blade 18Tx12"(x100)	18	12"	300	100
20-176	Bi-Metal Hacksaw Blade 24Tx12"(x100)	24	12"	300	100
20-177	Bi-Metal Hacksaw Blade 32Tx12"(x100)	32	12"	300	100
95-297	Bi-Metal Hacksaw Blade 18Tx12"(x10)	18	12"	300	10
95-298	Bi-Metal Hacksaw Blade 24Tx12"(x10)	24	12"	300	10
95-299	Bi-Metal Hacksaw Blade 32Tx12"(x10)	32	12"	300	10

HIGH SPEED STEEL HACKSAW BLADE



- Ground tooth design for improved cutting performance versus traditional hacksaw blades
- Can be used on most metals including unhardened tool steel and stainless-steel

SKU #	Description	TPI	Length (in.)	Length (mm)	No. of Blade
15-988	HSS Hacksaw Blade 18Tx12"(x100)	18	12"	300	100
15-982	HSS Hacksaw Blade 32Tx12"(x100)	32	12"	300	100
95-294	HSS Hacksaw Blade 18Tx12"(x10)	18	12"	300	10
95-295	HSS Hacksaw Blade 24Tx12"(x10)	24	12"	300	10
95-296	HSS Hacksaw Blade 32Tx12"(x10)	32	12"	300	10