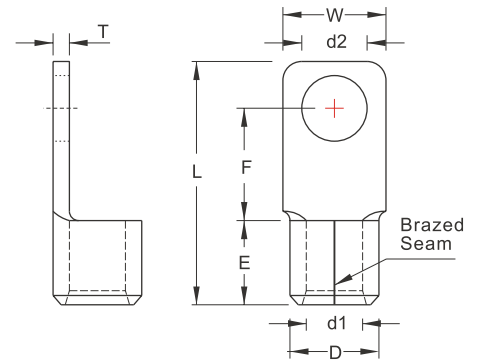


NON-INSULATED SQUARE TONGUE TERMINALS



MAXIMUM ELECTRIC CURRENT:

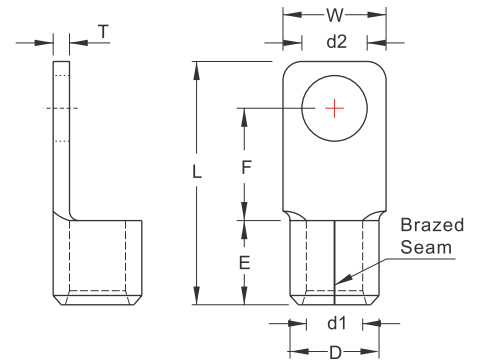
A.W.G.	4	2	1/0	3/0	4/0	250	300
AMP.	125	170	230	310	360	405	445

TERMINAL MATERIAL: COPPER

WIRE RANGE A.W.G. mm ²	ITEM NO.	STUD SIZE	DIMENSION <small>inch mm</small>								CRIMPING TOOL	Q'TY BOX	
			BRAZED SEAM		d2	W	F	L	E	D			d1
4 A.W.G. 22 mm ²	SQNBS22-5	#10	.209 5.3									IZUMI MODEL 9H-60, 12#A WITH DIE INDEX NO:22 OR K.S. MODEL KH-120 LY-2045E WITH DIE INDEX NO:22 OR 25	250
	SQNBS22-6	1/4	.252 6.4	.492 12.5	.531 13.5	1.260 32.0	.472 12.0	.453 11.5	.303 7.7	.067 1.7			
	SQNBS22-8	5/16	.331 8.4										
2 A.W.G. 38 mm ²	SQNBSS38-5	#10	.209 5.3									IZUMI MODEL 9H-60, 12#A WITH DIE INDEX NO:38 OR K.S. MODEL KH-120 KH-150 WITH DIE INDEX NO:35 OR 38	200
	SQNBS38-5	#10	.209 5.3										
	SQNBS38-6	1/4	.252 6.4	.520 13.2	.642 16.3	1.496 38.0	.543 13.8	.524 13.3	.366 9.3	.071 1.8			
	SQNBS38-8	5/16	.331 8.4										
1/0 A.W.G. 60 mm ²	SQNBS60-6	1/4	.252 6.4	.630 16.0	.787 20.0	1.929 49.0						IZUMI MODEL 9H-60, 9H-150, 12#A WITH DIE INDEX NO:60 OR K.S. MODEL KH-120 KH-150 WITH DIE INDEX NO:50	100
	SQNBSS60-8	5/16	.331 8.4	.630 16.0	.787 20.0	1.831 46.5							
	SQNBS60-8	5/16	.331 8.4	.630 16.0	.787 20.0	1.929 49.0	.728 18.5	.610 15.5	.433 11.0	.079 2.0			
	SQNBSS60-10	3/8	.413 10.5	.630 16.0	.787 20.0	1.878 47.7							
	SQNBS60-10	3/8	.413 10.5	.630 16.0	.787 20.0	1.929 49.0							
3/0 A.W.G. 80 mm ²	SQNBS80-6	1/4	.252 6.4									IZUMI MODEL 9H-150, 12#A WITH DIE INDEX NO:80 OR K.S. MODEL KH-120 KH-150 WITH DIE INDEX NO:70	50
	SQNBS80-8	5/16	.331 8.4	.858 21.8	.787 20.0	1.929 49.0	.748 19.0	.768 19.5	.571 14.5	.091 2.3			
	SQNBS80-10	3/8	.413 10.5										
	SQNBS80-12	1/2	.512 13.0										
4/0 A.W.G. 100 mm ²	SQNBS100-8	5/16	.331 8.4									IZUMI MODEL 9H-150, 12#A WITH DIE INDEX NO:100 OR K.S. MODEL KH-120 KH-150 WITH DIE INDEX NO:95	50
	SQNBS100-10	3/8	.413 10.5	.858 21.8	.827 21.0	2.087 53.0	.787 20.0	.878 22.3	.646 16.4	.106 2.7			
	SQNBS100-12	1/2	.512 13.0										
250/300 MCM 125 mm ²	SQNBS125-8	5/16	.331 8.4										25
	SQNBS125-10	3/8	.413 10.5	.858 21.8	.787 20.0	2.126 54.0	.866 22.0	.902 22.9	.689 17.5	.106 2.7			
	SQNBS125-12	1/2	.512 13.0										

UL cUL ALL LISTED
 © NOT UL AND C-UL LISTED

NON-INSULATED SQUARE TONGUE TERMINALS



MAXIMUM ELECTRIC CURRENT:

A.W.G.	300	350	400	500	600
AMP.	445	505	545	620	690

TERMINAL MATERIAL: COPPER

WIRE RANGE A.W.G. mm ²	ITEM NO.	STUD SIZE		DIMENSION <small>inch mm</small>							CRIMPING TOOL	Q'TY BOX
		BRAZED SEAM		W	F	L	E	D	d1	T		
250/300 MCM 150 mm ²	SQNBS150-8	5/16	.331 8.4								IZUMI MODEL 9H-150, 12#A WITH DIE INDEX NO:150 OR K.S. MODEL KSTP-150 WITH DIE INDEX NO:150	25
	SQNBS150-10	3/8	.413 10.5	.866 22.0	.878 22.3	2.402 61.0	1.043 26.5	1.043 26.5	.768 19.5	.126 3.2		
	SQNBS150-12	1/2	.512 13.0									
300/350 MCM 180 mm ²	SQNBS180-10	3/8	.413 10.5								IZUMI MODEL 12#A WITH DIE INDEX NO:180 OR K.S. MODEL KSTP-150 WITH DIE INDEX NO:180	10
	SQNBS180-12	1/2	.512 13.0	1.181 30.0	.878 22.3	2.667 68.0	1.122 28.5	1.128 28.6	.811 20.6	.138 3.5		
400/500 MCM 200 mm ²	SQNBSS200-10	3/8	.413 10.5	1.417 36.0	.878 22.3	2.728 69.3					IZUMI MODEL 12#A WITH DIE INDEX NO:200 OR K.S. MODEL KSTP-325 WITH DIE INDEX NO:240	10
	SQNBS200-10	3/8	.413 10.5	1.398 35.5	.878 22.3	2.854 72.5						
	SQNBSS200-12	1/2	.512 13.0	1.398 35.5	.878 22.3	2.728 69.3	1.220 31.0	1.287 32.7	.945 24.0	.157 4.0		
	SQNBS200-12	1/2	.512 13.0	1.398 35.5	.878 22.3	2.854 72.5						
	SQNBS200-16	5/8	.669 17.0									
400/500 MCM 250 mm ²	SQNBS250-10	3/8	.413 10.5									10
	SQNBS250-12	1/2	.512 13.0	1.417 36.0	.878 22.3	2.854 72.5	1.220 31.0	1.287 32.7	.945 24.0	.157 4.0		
500/600 MCM 325 mm ²	SQNBS325-12	Ⓞ 1/2	.512 13.0									5
	SQNBS325-16	Ⓞ 5/8	.669 17.0	1.465 37.2	1.260 32.0	3.453 87.7	1.398 35.5	1.480 37.6	1.102 28.0	.169 4.3		
	SQNBS325-18	Ⓞ 11/16	.748 19.0									



ALL LISTED

Ⓞ : NOT UL AND C-UL LISTED