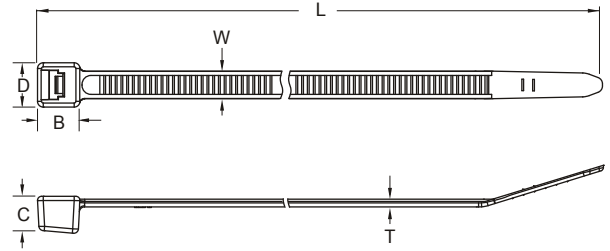


# NYLON CABLE TIES



**MATERIAL:** NYLON 66  
**FLAMMABILITY RATING:** UL94V-2

ITEM NO.	DIMENSION mm						BUNDLE DIA. mm		MIN TENSILE STRENGTH Kgs(lbs)	PACKING BAG
	L	W	B	C	D	T	MIN	MAX		
K-80M	80	2.5	4.5	3.8	4.5	1	1.6	15	8(18)	100 PCS
K-90M	96	2.5	4.5	3.8	4.5	1	1.6	21		
K-100M	100	2.5	4.5	3.8	4.5	1	1.6	22		
K-120M	120	2.5	4.5	3.8	4.5	1.1	1.6	28		
K-140M	142	2.5	4.5	3.8	4.5	1.1	1.6	35		
K-165M	165	2.5	4.5	3.8	4.5	1.1	1.6	43		
K-200M	203	2.5	4.5	3.8	4.5	1.2	1.6	53		
K-140I	143	3.6	6.7	5.4	6.8	1.25	2.5	33	18(40)	100 PCS
K-150I	150	3.6	6.7	5.4	6.8	1.25	2.5	35		
K-180I	180	3.6	6.7	5.4	6.8	1.3	2.5	44		
K-200I	203	3.6	6.7	5.4	6.8	1.3	2.5	52		
K-250I	250	3.6	6.7	5.4	6.8	1.3	2.5	65		
K-300I	300	3.6	6.7	5.4	6.8	1.35	2.5	76		
K-370I	368	3.6	6.7	5.4	6.8	1.3	2.5	102		
K-120S	120	4.6	7.0	6.0	7.7	1.3	3.0	22	22(50)	100 PCS
K-160S	160	4.6	7.0	6.0	7.7	1.3	3.0	38		
K-190S	190	4.6	7.0	6.0	7.7	1.3	3.0	46		
K-200S	203	4.6	7.0	6.0	7.7	1.3	3.0	50		
K-250S	250	4.6	7.0	6.0	7.7	1.35	3.0	65		
K-280S	280	4.6	7.0	6.0	7.7	1.35	3.0	75		
K-300S	300	4.6	7.4	6.0	8.3	1.4	3.0	80		
K-370S	368	4.6	7.4	6.0	8.3	1.4	3.0	102		
K-385S	385	4.6	7.4	6.0	8.3	1.4	3.0	105		
K-430S	432	4.6	7.4	6.0	8.3	1.45	3.0	120		
K-160SD	160	4.8	7.0	6.0	7.7	1.3	3.0	42	22(50)	100 PCS
K-190SD	190	4.8	7.0	6.0	7.7	1.3	3.0	52		
K-200SD	203	4.8	7.0	6.0	7.7	1.3	3.0	55		

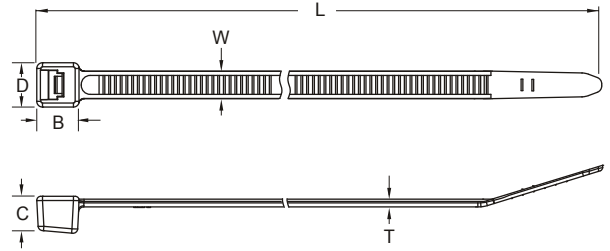
UL ALL LISTED

★ STANDARD COLOR:

- NATURE(WHITE)
- BLACK: -B
- BLUE: -BL
- GREEN: -GN
- GREY: -GY
- RED: -RE
- YELLOW: -YL
- ORANGE: -OR
- PURPLE: -PP
- FLUORESCENCE YELLOW: -FYL

★ EX:  
K-100M  
K-100M-B  
K-100M-YL

# NYLON CABLE TIES



**MATERIAL:** NYLON 66  
**FLAMMABILITY RATING:** UL94V-2

ITEM NO.	DIMENSION mm						BUNDLE DIA. mm		MIN TENSILE STRENGTH Kgs(lbs)	PACKING BAG
	L	W	B	C	D	T	MIN	MAX		
K-250SD	250	4.8	7.0	6.0	7.7	1.35	3.0	74	22(50)	100 PCS
K-300SD	300	4.8	7.4	6.0	8.3	1.4	3.0	80		
K-370SD	368	4.8	7.4	6.0	8.3	1.4	3.0	102		
K-430SD	432	4.8	8.1	6.0	8.2	1.45	3.0	125		
K-530SD	530	4.8	8.1	6.0	8.2	1.45	3.0	150		
K-150H	150	7.6	11.0	6.8	12.4	1.6	4.8	33	55(120)	100 PCS
K-200H	203	7.6	11.0	6.8	12.4	1.6	4.8	50		
K-250H	250	7.6	11.0	6.8	12.4	1.6	4.8	63		
K-280H	280	7.6	11.0	6.8	12.4	1.6	4.8	74		
K-300H	300	7.6	11.0	6.8	12.4	1.6	4.8	80		
K-340H	340	7.6	11.0	6.8	12.4	1.6	4.8	92		
K-370H	370	7.6	11.0	6.8	12.4	1.6	4.8	102		
K-380H	380	7.6	11.0	6.8	12.4	1.6	4.8	105		
K-450H	450	7.6	11.0	6.8	12.4	1.6	4.8	128		
K-500H	500	7.6	11.0	6.8	12.4	1.6	4.8	143		
K-550H	550	7.6	11.0	6.8	12.4	1.6	4.8	160		
K-750H	750	7.6	11.0	6.8	12.4	1.76	4.8	223		
K-430L	430	9.0	13.2	9.8	14.3	1.8	8.0	116		
K-450L	450	9.0	13.2	9.8	14.3	1.8	8.0	124		
K-550L	550	9.0	13.2	9.8	14.3	1.8	8.0	155		
K-610L	610	9.0	13.2	9.8	14.3	1.8	8.0	175		
K-710L	710	9.0	13.2	9.8	14.3	1.8	8.0	207		
K-780L	776	9.0	13.2	9.8	14.3	1.8	8.0	228		
K-810L	812	9.0	13.2	9.8	14.3	1.8	8.0	239		
K-920L	920	9.0	13.2	9.8	14.3	1.8	8.0	274		
K-1020L	1020	9.0	13.2	9.8	14.3	1.8	8.0	306		
K-1220L	1220	9.0	13.2	9.8	14.3	1.8	8.0	367		



★ STANDARD COLOR:

- NATURE(WHITE)
- BLACK: -B
- BLUE: -BL
- GREEN: -GN
- GREY: -GY
- RED: -RE
- YELLOW: -YL
- ORANGE: -OR
- PURPLE: -PP
- FLUORESCENCE YELLOW: -FYL

- ★ EX:
- K-100M
- K-100M-B
- K-100M-YL