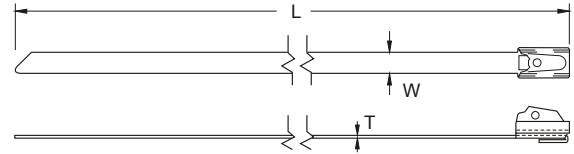


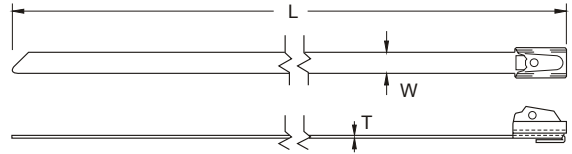
STAINLESS STEEL TIES (WITH BALL LOCK)



TEMPERATURE RESISTANCE: -80°C TO 538°C
RESISTANCE AGAINST CHEMICALS: ACID AND ALKALI RESISTANT
MATERIAL: 316 STAINLESS STEEL

ITEM NO.	Max Bundle Dia.		"L" Length Approx.		"W" Width Approx.		"T" Thickness		Min Loop Tensile		Pkg. Qty.
	inch	mm	inch	mm	inch	mm	inch	mm	lbs	kg	
STBCE-125S	0.8	20	5	125	.177	4.5	.012	0.3	100	45.4	100
STBCE-152S	1.0	25	6	152							
STBCE-200S	2.0	50	8	200							
STBCE-250S	2.4	60	10	250							
STBCE-300S	3.0	75	12	300							
STBCE-360S	4.0	102	14	360							
STBCE-400S	4.3	108	16	400							
STBCE-500S	5.5	140	20	500							
STBCE-520S	6.0	152	20	520							
STBCE-680S	8.0	203	27	680							
STBCE-840S	10.0	254	33	840							
STBCE-1050S	12.5	318	41	1050							
STBCE-152M	1.0	25	6	152	.315	8.0	.012	0.3	250	113.4	50
STBCE-200M	2.0	50	8	200							
STBCE-250M	2.4	60	10	250							
STBCE-300M	3.0	75	12	300							
STBCE-360M	4.0	102	14	360							
STBCE-520M	6.0	152	20	520							
STBCE-680M	8.0	203	27	680							
STBCE-840M	10.0	254	33	840							
STBCE-1050M	12.5	318	41	1050	25						

STAINLESS STEEL TIES (WITH BALL LOCK)



TEMPERATURE RESISTANCE: -80°C TO 538°C
RESISTANCE AGAINST CHEMICALS: ACID AND ALKALI RESISTANT
MATERIAL: 316 STAINLESS STEEL

ITEM NO.	Max Bundle Dia.		"L" Length Approx.		"W" Width Approx.		"T" Thickness		Min Loop Tensile		Pkg. Qty.
	inch	mm	inch	mm	inch	mm	inch	mm	lbs	kg	
STBCE-290L	3.2	80	11	290	.472	12	.016	0.4	595	270.0	25
STBCE-360L	4.0	102	14	360							
STBCE-430L	4.8	121	17	430							
STBCE-520L	6.0	152	20	520							
STBCE-600L	6.9	175	24	600							
STBCE-680L	8.0	203	27	680							
STBCE-750L	9.1	230	30	750							
STBCE-840L	10.0	254	33	840							
STBCE-910L	10.7	273	36	910							
STBCE-1000L	11.9	302	39	1000							
STBCE-1070L	12.7	325	42	1070							10
STBCE-1200L	13.8	351	47	1200							

  ALL LISTED