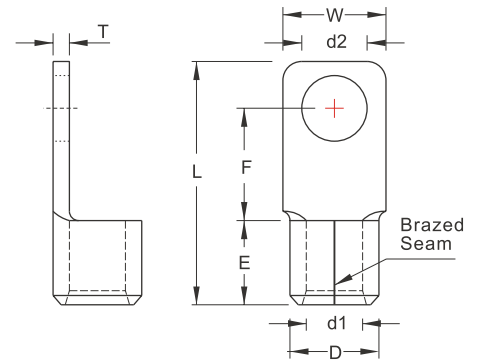


NON-INSULATED SQUARE TONGUE TERMINALS



MAXIMUM ELECTRIC CURRENT:

A.W.G.	4	2	1/0	3/0	4/0	250	300
AMP.	125	170	230	310	360	405	445

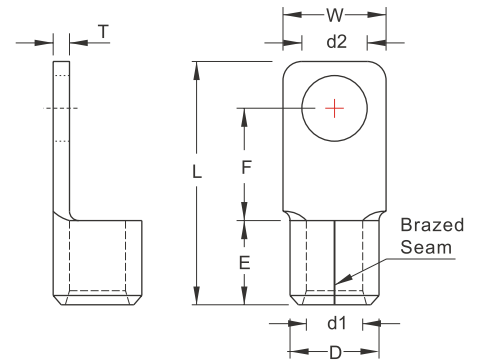
TERMINAL MATERIAL: COPPER

WIRE RANGE A.W.G. mm ²	ITEM NO.	STUD SIZE	DIMENSION <small>inch mm</small>								CRIMPING TOOL	Q'TY BOX	
			BRAZED SEAM		d2	W	F	L	E	D			d1
4 A.W.G. 22 mm ²	SQNBS22-5	#10	.209 5.3									IZUMI MODEL 9H-60, 12#A WITH DIE INDEX NO:22 OR K.S. MODEL KH-120 LY-2045E WITH DIE INDEX NO:22 OR 25	250
	SQNBS22-6	1/4	.252 6.4	.492 12.5	.531 13.5	1.260 32.0	.472 12.0	.453 11.5	.303 7.7	.067 1.7			
	SQNBS22-8	5/16	.331 8.4										
2 A.W.G. 38 mm ²	SQNBSS38-5	#10	.209 5.3									IZUMI MODEL 9H-60, 12#A WITH DIE INDEX NO:38 OR K.S. MODEL KH-120 KH-150 WITH DIE INDEX NO:35 OR 38	200
	SQNBS38-5	#10	.209 5.3										
	SQNBS38-6	1/4	.252 6.4	.520 13.2	.642 16.3	1.496 38.0	.543 13.8	.524 13.3	.366 9.3	.071 1.8			
	SQNBS38-8	5/16	.331 8.4										
1/0 A.W.G. 60 mm ²	SQNBS60-6	1/4	.252 6.4	.630 16.0	.787 20.0	1.929 49.0						IZUMI MODEL 9H-60, 9H-150, 12#A WITH DIE INDEX NO:60 OR K.S. MODEL KH-120 KH-150 WITH DIE INDEX NO:50	100
	SQNBSS60-8	5/16	.331 8.4	.630 16.0	.787 20.0	1.831 46.5							
	SQNBS60-8	5/16	.331 8.4	.630 16.0	.787 20.0	1.929 49.0	.728 18.5	.610 15.5	.433 11.0	.079 2.0			
	SQNBSS60-10	3/8	.413 10.5	.630 16.0	.787 20.0	1.878 47.7							
	SQNBS60-10	3/8	.413 10.5	.630 16.0	.787 20.0	1.929 49.0							
3/0 A.W.G. 80 mm ²	SQNBS80-6	1/4	.252 6.4									IZUMI MODEL 9H-150, 12#A WITH DIE INDEX NO:80 OR K.S. MODEL KH-120 KH-150 WITH DIE INDEX NO:70	50
	SQNBS80-8	5/16	.331 8.4	.858 21.8	.787 20.0	1.929 49.0	.748 19.0	.768 19.5	.571 14.5	.091 2.3			
	SQNBS80-10	3/8	.413 10.5										
	SQNBS80-12	1/2	.512 13.0										
4/0 A.W.G. 100 mm ²	SQNBS100-8	5/16	.331 8.4									IZUMI MODEL 9H-150, 12#A WITH DIE INDEX NO:100 OR K.S. MODEL KH-120 KH-150 WITH DIE INDEX NO:95	50
	SQNBS100-10	3/8	.413 10.5	.858 21.8	.827 21.0	2.087 53.0	.787 20.0	.878 22.3	.646 16.4	.106 2.7			
	SQNBS100-12	1/2	.512 13.0										
250/300 MCM 125 mm ²	SQNBS125-8	5/16	.331 8.4										25
	SQNBS125-10	3/8	.413 10.5	.858 21.8	.787 20.0	2.126 54.0	.866 22.0	.902 22.9	.689 17.5	.106 2.7			
	SQNBS125-12	1/2	.512 13.0										



ALL LISTED
 © NOT UL AND C-UL LISTED

NON-INSULATED SQUARE TONGUE TERMINALS



MAXIMUM ELECTRIC CURRENT:

A.W.G.	300	350	400	500	600
AMP.	445	505	545	620	690

TERMINAL MATERIAL: COPPER

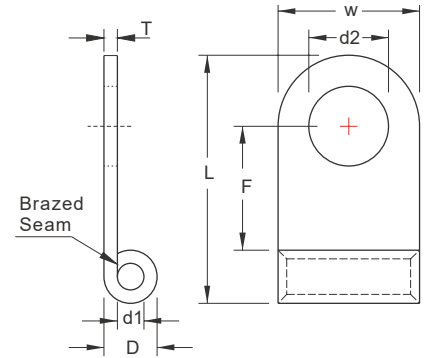
WIRE RANGE A.W.G. mm ²	ITEM NO.	STUD SIZE		DIMENSION <small>inch mm</small>							CRIMPING TOOL	Q'TY BOX	
		BRAZED SEAM		W	F	L	E	D	d1	T			
250/300 MCM 150 mm ²	SQNBS150-8	5/16	.331 8.4								IZUMI MODEL 9H-150, 12#A WITH DIE INDEX NO:150 OR K.S. MODEL KSTP-150 WITH DIE INDEX NO:150	25	
	SQNBS150-10	3/8	.413 10.5	.866 22.0	.878 22.3	2.402 61.0	1.043 26.5	1.043 26.5	.768 19.5	.126 3.2			
	SQNBS150-12	1/2	.512 13.0										
300/350 MCM 180 mm ²	SQNBS180-10	3/8	.413 10.5								IZUMI MODEL 12#A WITH DIE INDEX NO:180 OR K.S. MODEL KSTP-150 WITH DIE INDEX NO:180	10	
	SQNBS180-12	1/2	.512 13.0	1.181 30.0	.878 22.3	2.667 68.0	1.122 28.5	1.128 28.6	.811 20.6	.138 3.5			
400/500 MCM 200 mm ²	SQNBSS200-10	3/8	.413 10.5	1.417 36.0	.878 22.3	2.728 69.3					IZUMI MODEL 12#A WITH DIE INDEX NO:200 OR K.S. MODEL KSTP-325 WITH DIE INDEX NO:240	10	
	SQNBS200-10	3/8	.413 10.5	1.398 35.5	.878 22.3	2.854 72.5							
	SQNBSS200-12	1/2	.512 13.0	1.398 35.5	.878 22.3	2.728 69.3	1.220 31.0	1.287 32.7	.945 24.0	.157 4.0			
	SQNBS200-12	1/2	.512 13.0	1.398 35.5	.878 22.3	2.854 72.5							
	SQNBS200-16	5/8	.669 17.0										
400/500 MCM 250 mm ²	SQNBS250-10	3/8	.413 10.5									10	
	SQNBS250-12	1/2	.512 13.0	1.417 36.0	.878 22.3	2.854 72.5	1.220 31.0	1.287 32.7	.945 24.0	.157 4.0			
500/600 MCM 325 mm ²	SQNBS325-12	Ⓢ	1/2	.512 13.0								5	
	SQNBS325-16	Ⓢ	5/8	.669 17.0	1.465 37.2	1.260 32.0	3.453 87.7	1.398 35.5	1.480 37.6	1.102 28.0			.169 4.3
	SQNBS325-18	Ⓢ	11/16	.748 19.0									



ALL LISTED

Ⓢ : NOT UL AND C-UL LISTED

**NON-INSULATED
FLAG TERMINALS**



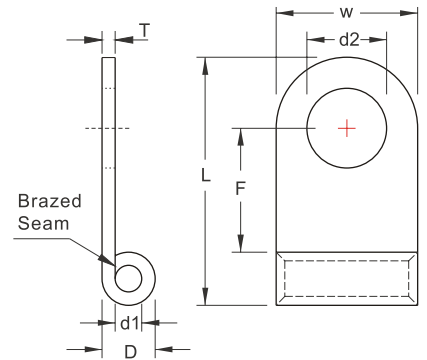
MAXIMUM ELECTRIC CURRENT:

A.W.G.	22	20	18	16	14	12	10	8	6	4	2
AMP.	9	12	17	18	30	35	50	70	95	125	170

TERMINAL MATERIAL: COPPER

WIRE RANGE A.W.G. mm ²	ITEM NO.	STUD SIZE		DIMENSION <small>inch mm</small>						CRIMPING TOOL	Q'TY BOX	
		BRAZED SEAM	d2	W	F	D	L	d1	T			
22-16 A.W.G. 0.5-1.5 mm ²	FGNB1-5	#10	.209 5.3	.378 9.6	.315 8.0	.134 3.4	.642 16.3	.067 1.7	.030 0.75	IZUMI MODEL KST2000D-FG WITH DIE INDEX NO.:16-14	1000	
16-14 A.W.G. 1.5-2.5 mm ²	FGNB2-3	#4	.126 3.2							IZUMI MODEL KST2000D-FG WITH DIE INDEX NO.:16-14	1000	
	FGNB2-5	#10	.209 5.3	.378 9.6	.287 7.3	.161 4.1	.642 16.3	.091 2.3	.031 0.8			
	FGNB2-6	1/4	.252 6.4									
12-10 A.W.G. 4-6 mm ²	FGNB5-4	#8	.169 4.3							ABKIO MODEL 0695U WITH DIE INDEX NO:1	1000	
	FGNB5-5	#10	.209 5.3	.378 9.6	.291 7.4	.220 5.6	.701 17.8	.134 3.4	.039 1.0			
	FGNB5-6	1/4	.252 6.4									
8 A.W.G. 8 mm ²	FGNB8-5	#10	.209 5.3	.500 12.7	.358 9.1			.906 23.0		K.S. MODEL KH-150 WITH DIE INDEX NO:10 OR ABKIO MODEL 0695U WITH DIE INDEX NO:2	500	
	FGNB8-6	1/4	.252 6.4									
	FGNBL8-6	1/4	.252 6.4			.283 7.2		.177 4.5	.047 1.2			
	FGNB8-8	5/16	.331 8.4	.610 15.5	.516 13.1		1.114 28.3					
	FGNB8-10	3/8	.413 10.5									
6 A.W.G. 14 mm ²	FGNB14-6	1/4	.252 6.4	.500 12.7	.378 9.6			.980 24.9		K.S. MODEL KH-150 WITH DIE INDEX NO:16 OR ABKIO MODEL 0695U WITH DIE INDEX NO:3	500	
	FGNB14-8	5/16	.331 8.4	.630 16.0	.531 13.5		.354 9.0	1.201 30.5	.228 5.8			.059 1.5
4 A.W.G. 22 mm ²	FGNB22-6	1/4	.252 6.4	.551 14.0	.382 9.7			1.110 28.2		K.S. MODEL KH-150 WITH DIE INDEX NO:25 OR ABKIO MODEL 0695U WITH DIE INDEX NO:4	250	
	FGNB22-8	5/16	.331 8.4	.689 17.5	.543 13.8	.453 11.5		1.339 34.0	.303 7.7			.067 1.7
	FGNB22-10	3/8	.413 10.5									
2 A.W.G. 38 mm ²	FGNB38-6	1/4	.252 6.4							K.S. MODEL KH-150 WITH DIE INDEX NO:35 OR ABKIO MODEL 0695U WITH DIE INDEX NO:5	200	
	FGNB38-8	5/16	.331 8.4	.720 18.3	.535 13.6	.524 13.3	1.421 36.1	.370 9.4	.071 1.8			
	FGNB38-10	3/8	.413 10.5									

**NON-INSULATED
FLAG TERMINALS**



MAXIMUM ELECTRIC CURRENT:

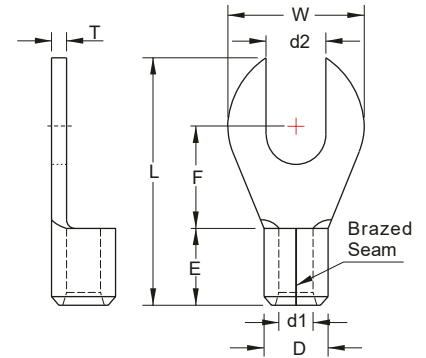
A.W.G.	1/0	2/0	3/0	4/0	250	300
AMP.	230	265	310	360	405	445

TERMINAL MATERIAL: COPPER

WIRE RANGE A.W.G. mm ²	ITEM NO.	STUD SIZE	DIMENSION <small>inch mm</small>							CRIMPING TOOL	Q'TY BOX
			BRAZED SEAM		W	F	D	L	d1		
1/0 A.W.G. 60 mm ²	FGNB60-6	1/4	.252 6.4	.878 22.3	.681 17.3	.610 15.5	1.732 44.0	.449 11.4	.071 1.8	IZUMI MODEL KH-150 WITH DIE INDEX NO:50 OR ABKIO MODEL 0695U WITH DIE INDEX NO:6	100
	FGNB60-8	5/16	.331 8.4								
	FGNB60-10	3/8	.413 10.5								
	FGNB60-12	1/2	.512 13.0								
2/0 A.W.G. 70 mm ²	FGNB70-8	5/16	.331 8.4	.941 23.9	.681 17.3	.689 17.5	1.839 46.7	.516 13.1	.079 2.0	IZUMI MODEL KH-150 WITH DIE INDEX NO:70 OR ABKIO MODEL 0695U WITH DIE INDEX NO:7	100
	FGNB70-10	3/8	.413 10.5								
	FGNB70-12	1/2	.512 13.0								
3/0 A.W.G. 80 mm ²	FGNB80-10	3/8	.413 10.5	1.063 27.0	.701 17.8	.768 19.5	2.000 50.8	.571 14.5	.091 2.3	IZUMI MODEL KH-150 WITH DIE INDEX NO:95 OR ABKIO MODEL 0695U WITH DIE INDEX NO:8	50
	FGNB80-12	1/2	.512 13.0								
4/0 A.W.G. 100 mm ²	FGNB100-8	5/16	.331 8.4	1.126 28.6	.697 17.7	.878 22.3	2.126 54.0	.646 16.4	.106 2.7	IZUMI MODEL KH-150 WITH DIE INDEX NO:120 OR ABKIO MODEL 0695U WITH DIE INDEX NO:9	50
	FGNB100-10	3/8	.413 10.5								
	FGNB100-12	1/2	.512 13.0								
250/300 MCM 150 mm ²	FGNB150-8	5/16	.331 8.4	1.000 25.4	.461 11.7	.969 24.6	1.890 48.0	.709 18.0	.126 3.2	K.S MODEL KH-150 WITH DIE INDEX NO:150 OR ABKIO MODEL 0695U WITH DIE INDEX NO:9	25
	FGNB150-10	3/8	.413 10.5								
	FGNB150-12	1/2	.512 13.0		.547 13.9	1.988 50.5					

※ : DEVELOPING ON DEMAND

**NON-INSULATED
FORK TERMINALS**



MAXIMUM ELECTRIC CURRENT:

A.W.G.	22	20	18	16	14	12	10	8
AMP.	9	12	17	18	30	35	50	70

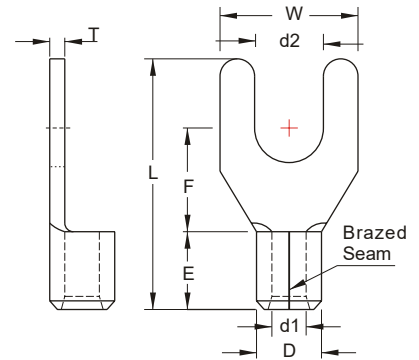
TERMINAL MATERIAL: COPPER

WIRE RANGE A.W.G. mm ²	ITEM NO.		STUD SIZE		DIMENSION <small>inch mm</small>						CRIMPING TOOL	Q'TY BOX					
	BRAZED SEAM	BUTTED SEAM	d2		W	F	L	E	D	d1			T				
22-16 A.W.G. 0.5-1.5 mm ²	ANB1-3.2	AN1-3.2	#4	.126 3.0	.127 5.5	.197 5.0	.457 11.6						IZUMI MODEL 5N18 WITH DIE INDEX NO.:1-25 OR K.S. MODEL KST2000D-1322 WITH DIE INDEX NO.:22-18 OR K.S. MODEL KM-70L WITH DIE SET NO.:DIE-1322 WITH DIE INDEX NO.:22-18	1000			
	ANB1-3.7	AN1-3.7	#6	.146 3.7	.260 6.6	.248 6.3	.531 13.5							1000			
	ANB1-4	AN1-4	#8	.169 4.3	.315 8.0	.276 7.0	.583 14.8							1000			
	ANB1-5	AN1-5	#10	.209 5.3			.567 14.4	.189 4.8	.134 3.4	.067 1.7	.030 0.75				1000		
	ANB1-6	AN1-6	1/4	.252 6.4	.457 11.6	.433 11.0	.799 20.3							1000			
	ANB1-8	AN1-8	5/16	.331 8.4			.764 19.4								1000		
	ANB1-10 *	AN1-10 *	3/8	.413 10.5	.591 15.0	.496 12.6	.886 22.5							1000			
16-14 A.W.G. 1.5-2.5 mm ²	ANB2-3.2	AN2-3.2	#4	.126 3.2	.260 6.6	.185 4.7	.472 12.0						IZUMI MODEL 5N18 WITH DIE INDEX NO.:2 OR K.S. MODEL KST2000D-1322 WITH DIE INDEX NO.:16-14 OR K.S. MODEL KM-70L WITH DIE SET NO.:DIE-1322 WITH DIE INDEX NO.:16-14	1000			
	ANB2-3.7	AN2-3.7	#6	.146 3.7		.248 6.3	.531 13.5							1000			
	ANB2-4	AN2-4	#8	.169 4.3	.335 8.5	.272 6.9	.626 15.9							1000			
	ANB2-5	AN2-5	#10	.209 5.3	.374 9.5	.291 7.4	.614 15.6	.189 4.8	.161 4.1	.091 2.3	.031 0.8			1000			
	ANB2-6	AN2-6	1/4	.252 6.4	.472 12.0	.433 11.0	.807 20.5							1000			
	ANB2-8	AN2-8	5/16	.331 8.4			.776 19.7								1000		
	ANB2-10	AN2-10	3/8	.413 10.5	.591 15.0	.496 12.6	.886 22.5							1000			
12-10 A.W.G. 4-6 mm ²	ANB5-4	AN5-4	#8	.169 4.3	.283 7.2	.228 5.8	.563 14.3						IZUMI MODEL 5N18 WITH DIE INDEX NO.:5.5 OR K.S. MODEL KST2000D-1322 WITH DIE INDEX NO.:12-10 OR K.S. MODEL KM-70L WITH DIE SET NO.:DIE-1322 WITH DIE INDEX NO.:12-10	1000			
	ANB5-5	AN5-5	#10	.209 5.3	.374 9.5	.358 9.1	.732 18.6							1000			
	ANB5-6	AN5-6	1/4	.252 6.4	.472 12.0	.413 10.5	.835 21.2							1000			
	ANB5-8	AN5-8	5/16	.331 8.4	.591 15.0	.531 13.5	1.000 25.4	.236 6.0	.220 5.6	.134 3.4	.039 1.0			1000			
	ANB5-10 *	AN5-10 *	3/8	.413 10.5			.965 24.5										
	ANB5-12	AN5-12	1/2	.512 13.0	.756 19.2	.630 16.0	1.146 29.1							1000			
8 A.W.G. 8 mm ²	ANB8-3.7		#6	.146 3.7	.315 8.0	.366 9.3	.807 20.5	.335 8.5	.283 7.2	.177 4.5	.047 1.2	IZUMI MODEL 5N18 WITH DIE INDEX NO.:8 OR K.S. MODEL KST2000D-1322 WITH DIE INDEX NO.:8 OR K.S. MODEL KM-70L WITH DIE SET NO.:DIE-1322 WITH DIE INDEX NO.:8	500				
	ANB8-4		#8	.169 3.7			.807 20.5										500
	ANBL8-4		#8	.169 3.7	.315 8.0	.335 8.5	.925 23.5										500
	ANB8-5		#10	.209 5.3	.315 8.0	.366 9.3	.807 20.5										500



ALL LISTED
* : DEVELOPING ON DEMAND

NON-INSULATED SPADE TERMINALS



MAXIMUM ELECTRIC CURRENT:

A.W.G.	22	20	18	16	14
AMP.	9	12	17	18	30

TERMINAL MATERIAL: COPPER

WIRE RANGE A.W.G. mm ²	ITEM NO.		STUD SIZE		DIMENSION <small>inch</small> <small>mm</small>						CRIMPING TOOL	Q'TY BOX			
	BRAZED SEAM	BUTTED SEAM	d2		W	F	L	E	D	d1			T		
22-16 A.W.G. 0.5-1.5 mm ²	SNB1-3.2 *	SN1-3.2	#4	.126 3.2	.224 5.7	.256 6.5	.630 16.0	.189 4.8	.134 3.4	.067 1.7	.030 0.75	IZUMI MODEL 5N18 WITH DIE INDEX NO.:1.25 OR K.S. MODEL KST2000D-1322 WITH DIE INDEX NO.:22-18 OR K.S. MODEL KM-70L WITH DIE SET NO.:DIE-1322 WITH DIE INDEX NO.:22-18	1000		
	SNBS1-3.7 *	SNS1-3.7	#6	.146 3.7									1000		
	SNBL1-3.7 *	SNL1-3.7	#6	.146 3.7	.252 6.4								1000		
	SNBLL1-3.7	SNLL1-3.7	#6	.146 3.7	.283 7.2								1000		
	SNBS1-4 *	SNS1-4	#8	.169 4.3	.252 6.4								1000		
	SNBM1-4 *	SNM1-4	#8	.169 4.3	.283 7.2								1000		
	SNBL1-4 *	SNL1-4	#8	.169 4.3	.319 8.1								1000		
	SNBS1-5 *	SNS1-5	#10	.209 5.3									1000		
	SNBL1-5 *	SNL1-5	#10	.209 5.3	.374 9.5								1000		
	SNBS1-6 *	SNS1-6	1/4	.252 6.4									1000		
	SNBL1-6 *	SNL1-6	1/4	.252 6.4	.472 12.0								.433 11.0	.866 22.0	1000
	SNB1-8	SN1-8	5/16	.331 8.4	.551 14.0								.394 10.0	.831 21.1	1000
16-14 A.W.G. 1.5-2.5 mm ²	SNB2-3.2 *	SN2-3.2	#4	.126 3.2	.224 5.7	.256 6.5	.630 16.0	.189 4.8	.161 4.1	.091 2.3	.031 0.8	IZUMI MODEL 5N18 WITH DIE INDEX NO.:2 OR K.S. MODEL KST2000D-1322 WITH DIE INDEX NO.:16-14 OR K.S. MODEL KM-70L WITH DIE SET NO.:DIE-1322 WITH DIE INDEX NO.:16-14	1000		
	SNBS2-3.7 *	SNS2-3.7	#6	.146 3.7									1000		
	SNBL2-3.7 *	SNL2-3.7	#6	.146 3.7	.236 6.0								1000		
	SNBLL2-3.7	SNLL2-3.7	#6	.146 3.7	.283 7.2								1000		
	SNBS2-4 *	SNS2-4	#8	.169 4.3	.252 6.4								1000		
	SNBM2-4 *	SNM2-4	#8	.169 4.3	.283 7.2								1000		
	SNBL2-4 *	SNL2-4	#8	.169 4.3	.319 8.1								1000		
	SNBS2-5 *	SNS2-5	#10	.209 5.3									1000		
	SNBL2-5 *	SNL2-5	#10	.209 5.3	.366 9.3								1000		
	SNBS2-6 *	SNS2-6	1/4	.252 6.4									1000		
	SNBL2-6 *	SNL2-6	1/4	.252 6.4	.472 12.0								.433 11.0	.866 22.0	1000
	SNB2-8	SN2-8	3/8	.331 8.4	.551 14.0								.394 10.0	.823 20.9	1000
	SNB2-10	SN2-10	5/16	.413 10.5	.689 17.5								.512 13.0	.996 25.3	1000



ALL LISTED
*: ADDITIONAL CERTIFIED