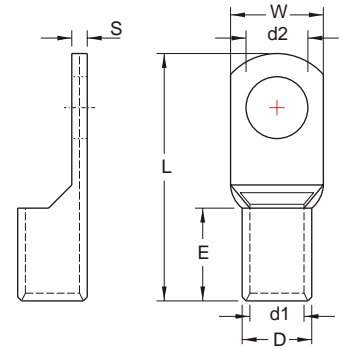


# NON-INSULATED COPPER TUBULAR LUGS (TL SERIES)



**MAXIMUM ELECTRIC CURRENT:**

A.W.G.	16	14	12	10	8	6	4	2
AMP.	18	30	35	50	70	95	125	170

**TERMINAL MATERIAL: COPPER**

WIRE RANGE A.W.G. mm <sup>2</sup>	ITEM NO.	STUD SIZE		DIMENSION mm					CRIMPING TOOL	Q'TY BOX					
		d2	W	d1	D	L	E	S							
16 A.W.G. 1.5 mm <sup>2</sup>	TL1.5-5	⊙ #10	5.3	8.0	1.8	3.3	16.0			K.S. MODEL KST 2000D-1516 WITH DIE INDEX NO:0.3-2.5	1000				
14 A.W.G. 2.5 mm <sup>2</sup>	TL2.5-4	#8	4.3	8.0	2.4	4.0	19.6	8.0		K.S. MODEL KST 2000D-1516 WITH DIE INDEX NO:0.3-2.5	1000				
	TL2.5-5	#10	5.3												
	TL2.5-6	1/4	6.5	10.0			21.0				1000				
12 A.W.G. 4.0 mm <sup>2</sup>	TL4-4	⊙ #8	4.3	10.0	3.1	4.8	21.0			K.S. MODEL KST 2000D-1516 WITH DIE INDEX NO:4-6	1000				
	TL4-5	⊙ #10	5.3												1000
	TL4-6	⊙ 1/4	6.5												1000
12-10 A.W.G. 4-6 mm <sup>2</sup>	TL6-4	⊙ #8	4.3	10.0	3.8	5.5	25.5			K.S. MODEL KST 2000D-1516 WITH DIE INDEX NO:4-6	500				
	TL6-5	⊙ #10	5.3												500
	TL6-6	⊙ 1/4	6.5												500
8 A.W.G. 10 mm <sup>2</sup>	TL10-5	#10	5.3	12.6	4.5	6.2	27.0	10.0	1.1	K.S. MODEL KST 2000D-1516 WITH DIE INDEX NO:10	500				
	TL10-6	⊙ 1/4	6.5												500
	TL10-8	⊙ 5/16	8.4												500
6 A.W.G. 16 mm <sup>2</sup>	TL16-5	⊙ #10	5.3	12.6	5.5	7.2	29.5	10.5	1.3	K.S. MODEL KST 2000D-1516 WITH DIE INDEX NO:16	250				
	TL16-6	⊙ 1/4	6.5												250
	TL16-8	⊙ 5/16	8.4												250
4 A.W.G. 25 mm <sup>2</sup>	TL25-6	1/4	6.5	15.0	7.0	9.0	33.0	12.0	1.65	K.S. MODEL KSTHX-150B WITH DIE INDEX NO:25	200				
	TL25-8	5/16	8.4												200
	TL25-10	3/8	10.5												200
2 A.W.G. 35 mm <sup>2</sup>	TL35-6	1/4	6.5	15.2	8.2	10.6	38.0	14.2	2.5	K.S. MODEL KSTHX-150B WITH DIE INDEX NO:35 OR NOVOPRESS MODEL HPM400	200				
	TL35-8	5/16	8.4												200
	TL35-10	3/8	10.5												100

Ⓢ Ⓢ ALL LISTED ⊙ : NOT UL AND C-UL LISTED