

Valve

## BVU3-3

RoHS2 Compliant

Ball Valve turns on and off air pressure to pneumatic devices.



The image is BVU6-6.

**Model type** Mini (10) series, Union Straight

**Weight** 12.0g

**Shipping unit** 1pc.

**Resin** PBT

**Metal** Brass with electroless nickel plating

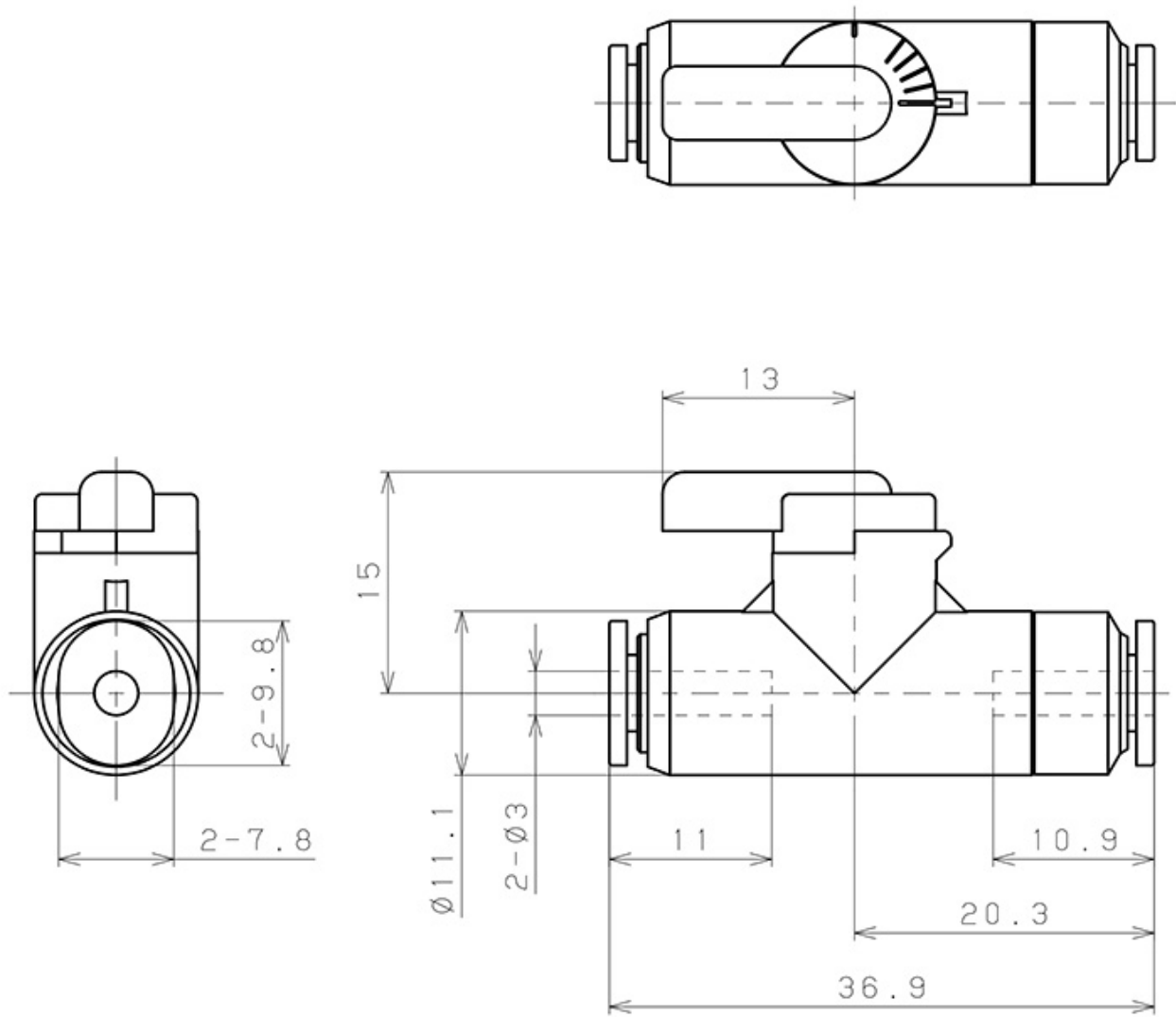
**Seal rubber** NBR

## Port size

**Tube dia.**

φ3mm

## Outline Dimensional Drawing



Number of port

2

## Detailed Safety Instructions

### Caution

1. Do not use a lubricator on products.

2. When using under negative pressure, install a vacuum filter on the suction side. Dust sucked in may cause malfunctioning.

[Common Safety Instructions >](#)