



The image is of BVC20-0802SUS

Valve

BVC60-1202SUS

RoHS2 Compliant

Anti-corrosion ball valve is ideal for use in special environments.

Stainless steel SUS304 is used for metal parts

Model type Straight

Weight 122.0g

Shipping unit 1pc.

Resin PBT PPS

Metal SUS304

Seal rubber FKM

No copper-based
metallic material
is used in flow
paths

Low
concentration
ozone measures

Port size

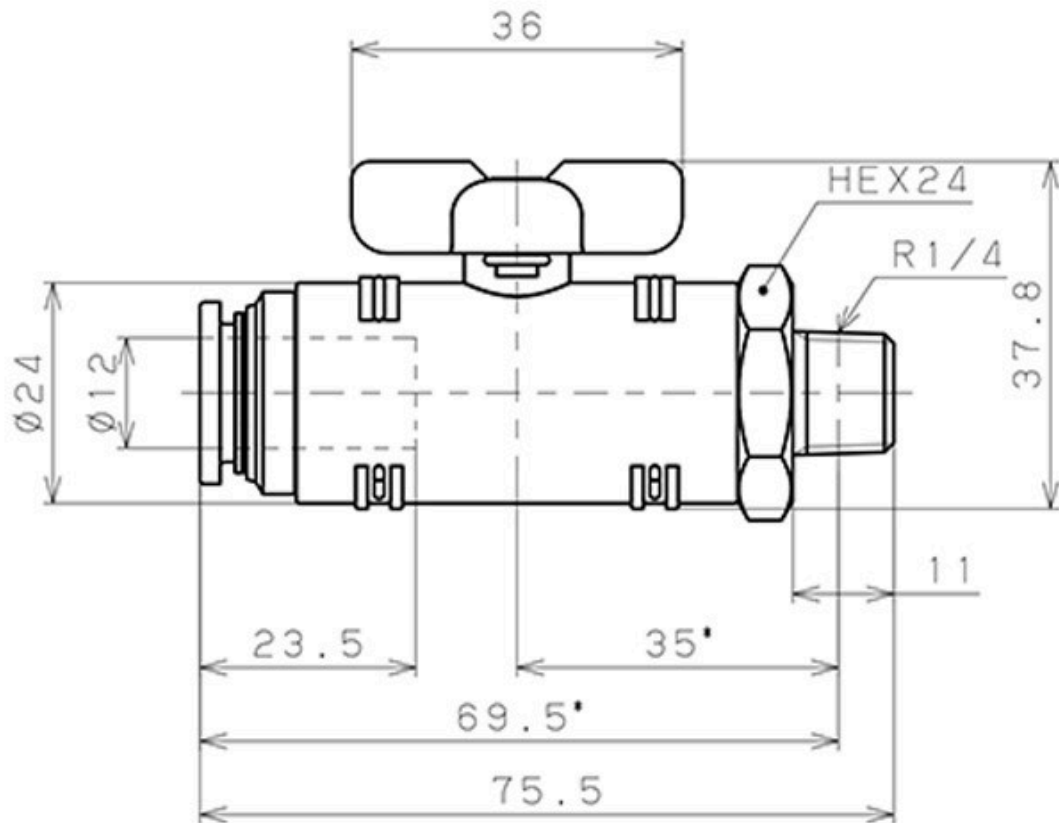
Tube dia.

φ12mm

Thread size

R1/4

Outline Dimensional Drawing



*The dimension is the one after installation and just for reference.

Specifications

Fluid medium	Air, Water (Conditional), Others such as chemicals (Conditional*)
Max. operating pressure	0.9MPa

Max. vacuum	-100kPa
Operating temp. range	0 to 60°C(No freezing) : Thread type

Warning

*Adhere to the following conditions in case the fluid medium is water or any liquids.

Surge pressure must be controlled lower than max. operating pressure when using water or any liquids as a fluid medium.

Tap water in Japan, which is soft water(low mineral content) can be used. Carry out tests under actual operating conditions for using other kind of water.

Be sure to place Insert Ring(WR) into the tubing end when the product is used with water or any other liquids.

Please check the chemical compatibility before use.

Number of port

2

Detailed Safety Instructions

Warning

1. Check chemical resistance before using the products, when the fluid medium is chemicals, solvent or mixed gases. Depending on the usage conditions, it may cause damage to the products, the tubing fall-off, and a fluid leakage.
2. Do not use the product if it does not satisfy all the conditions listed in the specifications when the fluid medium is water or liquid. It may cause damage to the product, the tubing fall-off, and a fluid leakage.

Caution

1. Do not use a lubricator on products.
2. Make sure to turn the handle until it stops at 90 degrees. Inadequate turning can cause a poor path connection and insufficient flow.
3. When using under negative pressure, install a vacuum filter on the suction side. Dusts being sucked can cause malfunction of the products and the system.
4. Do not pull out the lock pin, as this will cause the unit to separate. Also, make sure that the lock pin is securely inserted when using.
5. Corrosion resistance varies by operating conditions. Evaluate the compatibility before use.
6. Precautions when installing Bracket for in-line type Refer to the following tightening torque chart when tightening flat head screws to install the bracket. Tighten the screws with appropriate torque. Not doing so could cause damages to the screws or the screws being loosen and the bracket could come off.

Table: Tightening torque for union type fixing holder

Model	Thread size	Tightening torque
BVUH20	M3×0.5	0.5 ~ 0.7 N·m
BVUH60	M4×0.7	0.8 ~ 1.0 N·m

7. Precautions when using Handle Lockout The product is not designed for strict tamper-proof and easy to break or tear by a knife or nippers. Deploy a stricter locking system as needed.
8. Precautions when using Swivelling Stopper Do not rotate the handle with excessive torque. Doing so may cause the stopper to become stripped.

Common Safety Instructions >

Option items

Lockout

- The handle position can be visually recognized through se-transparent lockout cover.



See outline dimensions & applicable product models

