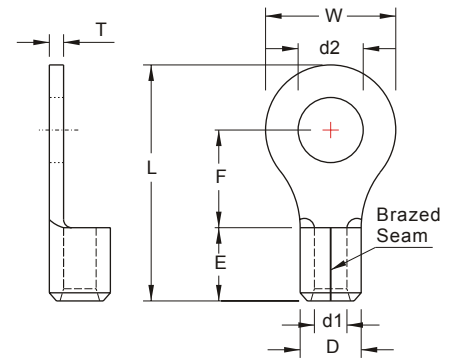


NON-INSULATED RING TERMINALS



MAXIMUM ELECTRIC CURRENT:

A.W.G.	12	10	8
AMP.	35	50	70

TERMINAL MATERIAL: COPPER

SURFACE TREATMENT: TIN PLATED

WIRE RANGE A.W.G. mm ²	ITEM NO.		STUD SIZE		DIMENSION <small>inch mm</small>						CRIMPING TOOL	Q'TY BOX	
	BRAZED SEAM	BUTTED SEAM	d2		W	F	L	E	D	d1			T
12-10 A.W.G. 4-6 mm ²	RNB5-8 ■ *	RN5-8 ■	5/16	.331 8.4	.591 15.0	.524 13.3	1.055 26.8	.236 6.0	.220 5.6	.134 3.4	.039 1.0	IZUMI MODEL 5N18 WITH DIE INDEX NO.:5.5 OR K.S. MODEL KST2000D-1322 WITH DIE INDEX NO.:12-10 OR K.S. MODEL KM-70L WITH DIE SET NO: DIE-1322 WITH DIE INDEX NO.:12-10	1000
	RNB5-10 ■ *	RN5-10 ■	3/8	.413 10.5	.591 15.0	.524 13.3	1.055 26.8						1000
	RNB5-11 ■ *	RN5-11 ■	7/16	.453 11.5									1000
	RNB5-12 * ■	RN5-12 ■	1/2	.512 13.0	.756 19.2	.630 16.0	1.244 31.6						500
	RNB5-13 ■ *	RN5-13 ■	1/2	.551 14.0									500
	RNB5-14 ■ *	RN5-14 ■	9/16	.591 15.0									500
	RNB5-16 ■ *	RN5-16 ■	5/8	.669 17.0	1.260 32.0	.992 25.2	1.858 47.2						500
	RNB5-18 ■ *	RN5-18 ■	11/16	.748 19.0									500
	RNB5-20 ■ *	RN5-20 ■	3/4	.827 21.0									500
8 A.W.G. 8 mm ²	RNB8-3.7 ■ *		#6	.146 3.7			.846 21.5	.335 8.5	.283 7.2	.177 4.5	.047 1.2	IZUMI MODEL 5N18 WITH DIE INDEX NO.:8 OR K.S. MODEL KST2000D-1322 WITH DIE INDEX NO.:8 OR K.S. MODEL KM-70L WITH DIE SET NO: DIE-1322 WITH DIE INDEX NO.:8	500
	RNBS8-4 ■		#8	.169 4.3	.315 8.0	.366 9.3							500
	RNBL8-4 ■		#8	.169 4.3	.472 12.0		.937 23.8						500
	RNBS8-5 ■		#10	.209 5.3	.346 8.8	.429 10.5	.921 23.4						500
	RNBM8-5 * ■		#10	.209 5.3	.472 12.0	.366 9.3	.937 23.8						500
	RNBL8-5 ■		#10	.209 5.3	.591 15.0	.543 13.8	1.173 29.8						500
	RNBS8-6 ■ *		1/4	.252 6.4	.472 12.0	.366 9.3	.937 23.8						500
	RNBL8-6 ■		1/4	.252 6.4									500
	RNB8-8 ■ *		5/16	.331 8.4	.591 15.0	.535 13.6	1.150 29.2						500
	RNB8-10 ■ *		3/8	.413 10.5									500
	RNB8-11 ■ *		7/16	.453 11.5	.787 20.0	.591 15.0	1.319 33.5						500
	RNB8-12 ■		1/2	.512 13.0									500



ALL LISTED

* : ADDITIONAL CERTIFIED

※ : DEVELOPING ON DEMAND

■ : 90D available

Products can be bend to 90-degrees angle.