



# MASTER LEDtube T8

## MAS LEDtube 1200mm HO 13W865 T8

MASTER, LED, T8, EM/Mains, Single-end, 1200 mm, 220-240 V, 13 W, 36W TL-D, 6500 K, 2100 lm, 60000 hour(s)

The Philips MASTER LEDtube integrates a LED light source into a traditional fluorescent form factor. Its unique design creates a perfectly uniform visual appearance, which cannot be distinguished from traditional fluorescent. These T8 LED tubes are the right choice for absolute performance and are designed to stand up to everyday conditions. Unparalleled savings thanks to low energy consumption and an exceptionally long lifetime ensure this tube masters every demanding application.

### Warnings and Safety

- NOTE: The overall energy efficiency and light distribution of any installation that uses these lamps will be determined by the design of the installation.

### Product data

General Information	
Cap-Base	G13
Nominal lifetime	60,000 hour(s)
Switching Cycle	200,000
Lighting Technology	LED

Light Technical	
Color Code	865 [CCT of 6500K]
Beam Angle (Nom)	190 degree(s)
Luminous Flux	2,100 lm
Color Designation	Cool Daylight
Correlated Color Temperature (Nom)	6500 K

Luminous Efficacy (rated) (Nom)	161 lm/W
Color Consistency	<6
Color rendering index (CRI)	80
LLMF At End Of Nominal Lifetime (Nom)	70 %
Photobiological safety according to EN 62471	RG0

Operating and Electrical	
Input Frequency	50 to 60 Hz
Power Consumption	13 W
Lamp Current (Max)	63 mA
Lamp Current (Min)	58 mA
Wattage Equivalent	36 W

MASTER LEDtube T8

Starting Time (Nom)	0.5 s
Warm-up time to 60% light	0.5 s
Power Factor (Fraction)	0.9
Voltage (Nom)	220-240 V
LED alternative to fluorescent lamp power	36W TL-D
Ballast Compatibility	EM/Mains

Temperature

T-Case Maximum (Nom)	50 °C
----------------------	-------

Controls and Dimming

Dimmable	No
----------	----

Mechanical and Housing

Bulb Finish	Frosted
Bulb Material	Plastic
Product Length	1,200 mm
Bulb Shape	T8
Net Weight (Piece)	0.180 kg

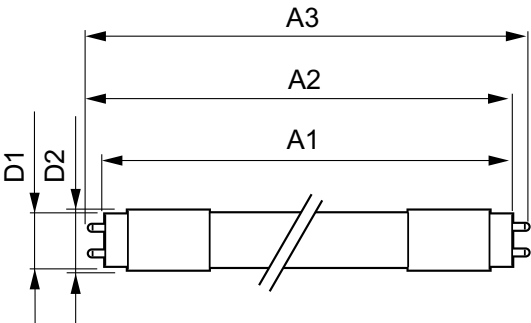
Approval and Application

Energy Saving Product	Yes
Approval Marks	RoHS compliance KEMA Keur certificate
EU RoHS compliant	Yes
Ambient temperature range	-20 to +45 °C

Product Data

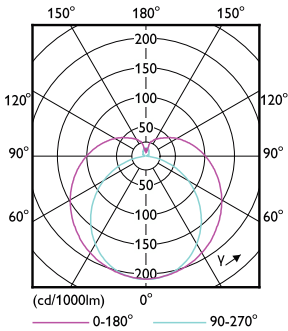
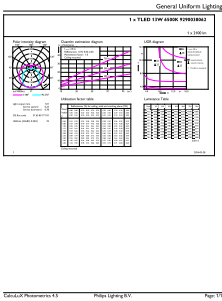
Order product name	MAS LEDtube 1200mm HO 13W865 T8
Full product name	MAS LEDtube 1200mm HO 13W865 T8
Full product code	872016931611900
Order code	929003806208
Material Nr. (12NC)	929003806208
Numerator - Quantity Per Pack	1
EAN/UPC - Product/Case	8720169316119
Numerator - Packs per outer box	20
EAN/UPC - Case	8720169316126

Dimensional drawing



Product	D1	D2	A1	A2	A3
MAS LEDtube 1200mm HO 13W865 T8	25.8 mm	28 mm	1,198.2 mm	1,205.3 mm	1,212.4 mm

Photometric data

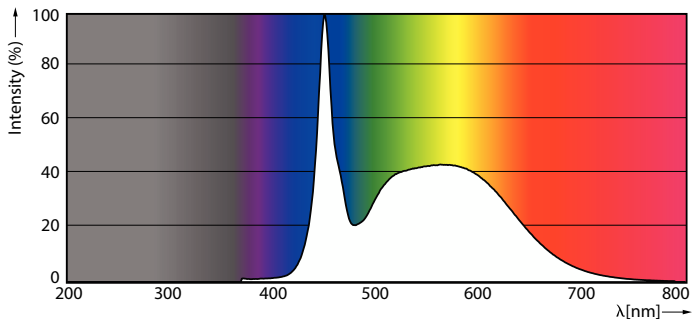


General uniform lighting - MAS LEDtube 1200mm HO 13W865 T8

Light Distribution Diagram - MAS LEDtube 1200mm HO 13W865 T8

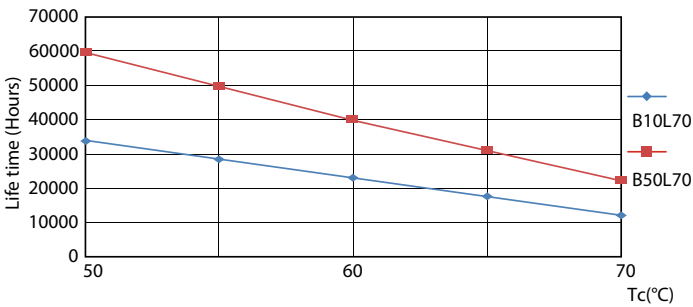
MASTER LEDtube T8

Photometric data

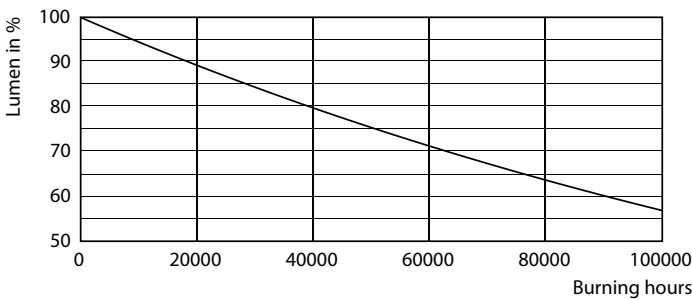


Spectral Power Distribution Colour - MAS LEDtube 1200mm HO 13W865 T8

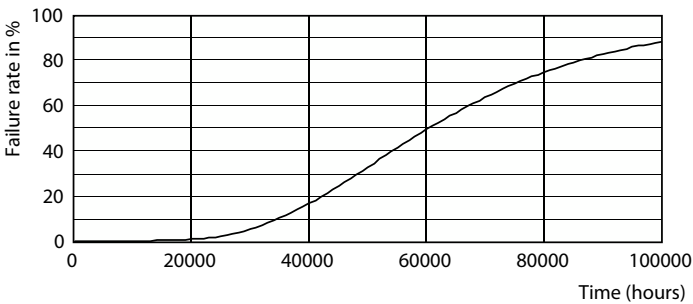
Lifetime



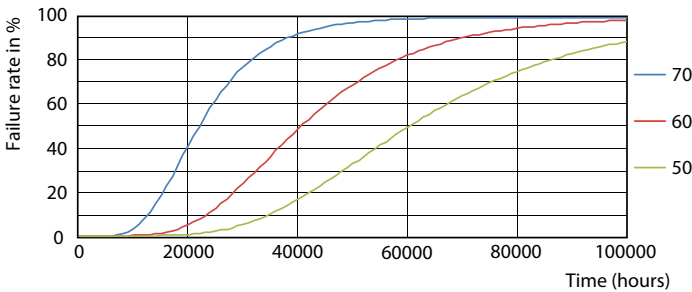
LEDtube 60K 5070 LifetimeVsTc-LED



Lumen Maintenance Diagram - MAS LEDtube 1200mm HO 13W865 T8



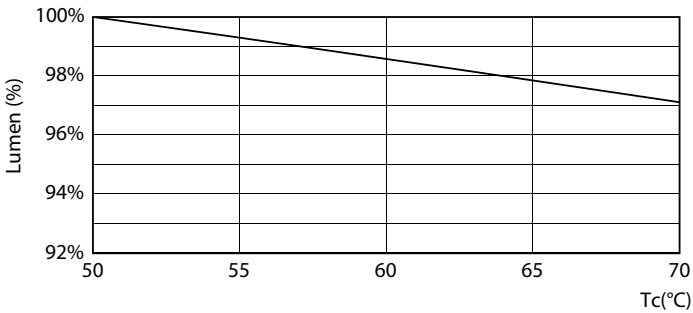
Life Expectancy Diagram



LEDtube 60K 5070 FailureRate-LED

MASTER LEDtube T8

Lifetime



Lumen Maintenance Diagram - MAS LEDtube 1200mm HO 13W865 T8

