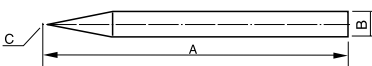
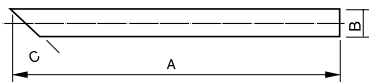


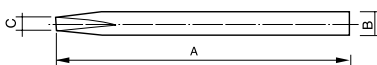
## Outer-Heated Soldering Tip, Pointed



No.	Name	Length (A)	Diameter (B)	Tip Size (C)
03241	Outer-Heated Soldering Tip, Ultra Pointed 30W	70mm	4mm	R 0.2
03242	Outer-Heated Soldering Tip, Ultra Pointed 40W	70mm	5mm	R 0.2
03211	Outer-Heated Soldering Tip, Pointed 30W	75mm	4mm	R 0.5
03212	Outer-Heated Soldering Tip, Pointed 40W	75mm	5mm	R 0.5
03213	Outer-Heated Soldering Tip, Pointed 50W	80mm	6mm	R 0.3



No.	Name	Length (A)	Diameter (B)	Tip Size (C)
03231	Outer-Heated Soldering Tip, Skew 30W	70mm	4mm	45°
03232	Outer-Heated Soldering Tip, Skew 40W	75mm	5mm	45°
03233	Outer-Heated Soldering Tip, Skew 50W	80mm	6mm	45°



No.	Name	Length (A)	Diameter (B)	Tip Size (C)
03221	Outer-Heated Soldering Tip, Slotted 30W	70mm	4mm	3
03222	Outer-Heated Soldering Tip, Slotted 40W	75mm	5mm	3
03223	Outer-Heated Soldering Tip, Slotted 50W	80mm	6mm	3.5

- SATA long-life externally-heated soldering iron tip made of quality copper by precision processing
- Specially treated alloy layer for excellent high temperature oxidation resistance and wear resistance with anti-corrosion surface for excellent corrosion resistance
- Tinned tip of the soldering iron to facilitate welding
- Suitable for SATA external long-life electric soldering iron

No.	Tip Shape	Power			
03211	Pointed	30W	10	-	-
03212	Pointed	40W	10	1000	10
03213	Pointed	50W	10	800	15.6
03221	Slotted	30W	10	1000	8.1
03222	Slotted	40W	10	-	-
03223	Slotted	50W	10	800	14.7
03231	Skew	30W	10	250	4.6
03232	Skew	40W	10	1000	12
03233	Skew	50W	10	300	12.3
03241	Ultra Pointed	30W	10	1000	12
03242	Ultra Pointed	40W	10	1000	12

▲ Excluded from lifetime warranty terms.

## Outer-Heated Natural Mica Heating Element



- Externally-heated mica heating core suitable for SATA external long-life electric soldering iron
- Heating core with long life
- Heating core made of quality double-layer nickel-chromium wire wound around natural mica from India
- Heating core life of SATA external heating iron extended
- Simple replacement device for heating core
- End of the heating core outlet and the end of the power outlet connected via micro-connector crimping process
- Connection between the heating core and the power supply realized through connector

No.	Power			
03251	30W	10	480	5.7
03252	40W	10	480	6.1
03253	50W	10	480	7
03254	60W	10	480	7.4

▲ Excluded from lifetime warranty terms.

## Coiled Soldering Wire



No.	Model			
90311	0.5mm/250g	-	10	2.6
90312	0.8mm/250g	-	10	2.6
90313	1.0mm/250g	-	10	2.6
90314	1.0mm/500g	-	10	5.6

▲ Excluded from lifetime warranty terms.