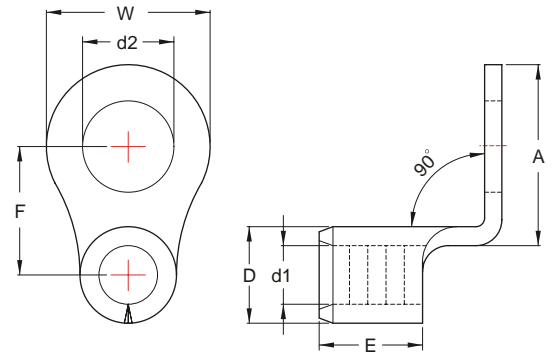


NON-INSULATED RING TERMINALS (RNB-90D SERIES)



MAXIMUM ELECTRIC CURRENT:

A.W.G.	22	20	18	16	14
AMP.	9	12	17	18	30

TERMINAL MATERIAL: COPPER

WIRE RANGE A.W.G. mm ²	ITEM NO.		STUD SIZE	DIMENSION <small>inch mm</small>								CRIMPING TOOL	Q'TY BOX
	BRAZED SEAM	BUTTED SEAM		d2	W	F	A	E	D	d1	T		
22-16 A.W.G. 0.5-1.5 mm ²	RNB1-3.2-90D*	RN1-3.2-90D* [Ⓢ]	#4	.126 3.2	.217 5.5	.169 4.3	.244 6.2	.189 4.8	.134 3.4	.067 1.7	.030 0.75	IZUMI MODEL 5N18 WITH DIE INDEX NO.:1.25 OR K.S. MODEL KST2000D-1322 WITH DIE INDEX NO.:22-18	1000
	RNBS1-4-90D [Ⓢ]	RNS1-4-90D [Ⓢ]	#8	.169 4.3	.260 6.6	.232 5.9	.323 8.2						1000
	RNBL1-4-90D	RNL1-4-90D [Ⓢ]	#8	.169 4.3	.315 8.0	.287 7.3	.406 10.3						1000
	RNB1-5-90D	RN1-5-90D [Ⓢ]	#10	.209 5.3	.433 11.0	.276 7.0	.394 10.0						1000
	RNB1-6-90D	RN1-6-90D [Ⓢ]	1/4	.252 6.4	.457 11.6	.433 11.0	.630 16.0						1000
16-14 A.W.G. 1.5-2.5 mm ²	RNB2-3.2-90D	RN2-3.2-90D	#4	.126 3.2	.260 6.6	.209 5.3	.291 7.4	.189 4.8	.161 4.1	.091 2.3	.031 0.8	IZUMI MODEL 5N18 WITH DIE INDEX NO.:2 OR K.S. MODEL KST2000D-1322 WITH DIE INDEX NO.:16-14	1000
	RNBL2-3.2-90D	RNL2-3.2-90D	#4	.126 3.2	.335 8.5	.307 7.8	.437 11.1						1000
	RNBS2-4-90D [Ⓢ]	RNS2-4-90D [Ⓢ]	#8	.169 4.3	.260 6.6	.244 6.2	.323 8.2						1000
	RNBL2-4-90D	RNL2-4-90D [Ⓢ]	#8	.169 4.3	.335 8.5	.272 6.9	.394 10.0						1000
	RNBS2-5-90D	RNS2-5-90D [Ⓢ]	#10	.209 5.3	.433 11.0	.311 7.9	.433 11.0						1000
	RNBL2-5-90D	RNL2-5-90D	#10	.209 5.3	.374 9.5	.287 7.3	.429 10.9						1000
	RNB2-6-90D	RN2-6-90D [Ⓢ]	1/4	.252 6.4	.472 12.0	.413 10.5	.606 15.4						1000
	RNB2-8-90D	RN2-8-90D [Ⓢ]	5/16	.331 8.4	.535 13.6	.472 12.0	.732 18.6						1000
RNB2-10-90D	RN2-10-90D [Ⓢ]	3/8	.413 10.5				1000						



ALL LISTED

Ⓢ : NOT UL AND C-UL LISTED

* : DEVELOPING ON DEMAND