



Valve

# BVU20-5/16-5/16

RoHS2 Compliant

Ball Valve turns on and off air pressure to pneumatic devices.  
Water can be used.

**Model type** 20 & 60 series, Union Straight

**Weight** 41.0g

**Shipping unit** 1pc.

**Resin** PPS

**Metal** Brass with electroless nickel plating

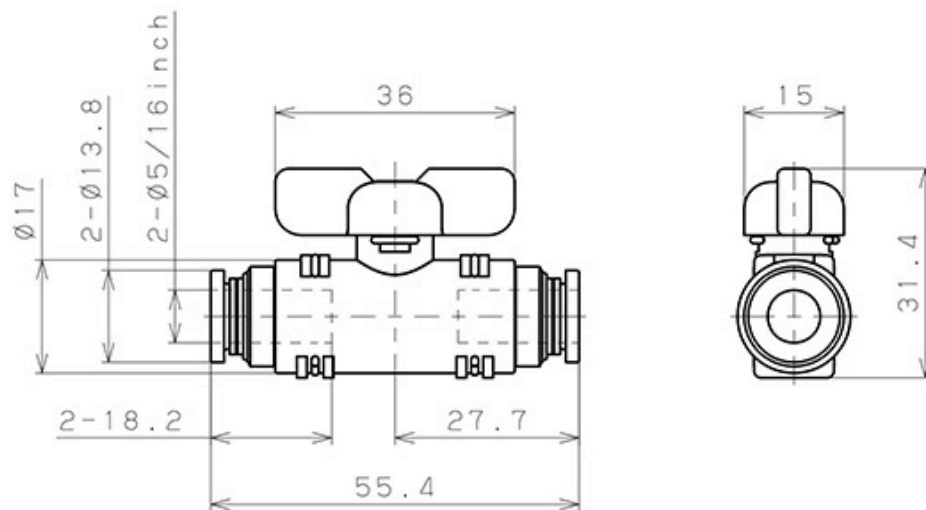
**Seal rubber** NBR

## Port size

### Tube dia.

φ5/16"

## Outline Dimensional Drawing



## Specifications

Fluid medium	Air, Water (Conditional*)
Max. operating pressure	0.9MPa

Max. vacuum	-100kPa
Operating temp. range	0~60°C (No freezing)

## Warnings

\* Make sure to follow the instructions below when the fluid medium is water.

Surge pressure must be controlled lower than max. operating pressure when using water as a fluid medium.

Tap water in Japan free from foreign substances or contamination can be used. Carry out the evaluation under an actual operating condition for using other kind of water.

Be sure to place Insert Ring (WR) into the tube edge when using water as a fluid medium.

## Number of port

2

## Detailed Safety Instructions

### Warning

1. For the 20 & 60 series, do not use them unless all the conditions stated in the specification are met when the fluid medium is water. It may cause damage to the product, disengagement of the tube, or leakage.

### Caution

1. Do not use a lubricator on products.
2. When operating the 20 & 60 series, turn the handle until it stops at 90 degrees. Inadequate turning may cause poor continuity and insufficient flow due to insufficient switching.

3. When using under negative pressure, install a vacuum filter on the suction side. Dust sucked in may cause malfunctioning.
4. Do not pull out the locking pin, as this will cause the unit to separate. Also, make sure that the lock pin is securely inserted when using.

[Common Safety Instructions >](#)

## Option items

---

### Mounting bracket for Union type

- Fixes Ball Valve Union Type.



[See outline dimensions & applicable product models](#)



### Lockout

- The handle position can be visually recognized through se-transparent lockout cover.



See outline dimensions & applicable product models

